

September 29, 2020

Honorable KP George and Fort Bend County Commissioners Court
Honorable Mark Henry and Galveston County Commissioners Court
Honorable L.M. Sebesta, Jr. and Brazoria County Commissioners Court

RE: PROPOSED CDBG-MIT JOINT APPLICATION & PROJECT FOR CONSIDERATION BETWEEN FORT BEND COUNTY, GALVESTON COUNTY, AND BRAZORIA COUNTY

Dear Judge George, Judge Henry, and Judge Sebesta:

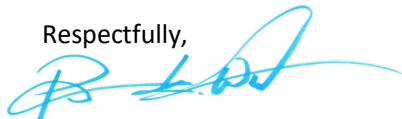
Please allow this letter, and the detail contained within, to serve as the basis for discussion of a proposed project between Fort Bend County, Galveston County, and Brazoria County for consideration in the upcoming Community Development Block Grant – Mitigation (CDBG-MIT) competition. The project consists of erosion repair of the Brazos River to protect the evacuation route of US 99 and US 59/I-69 bridges. The enclosed documents detail the project area, project scope, proposed budget, project beneficiaries, project schedule, and preliminary application score. Current estimated project costs are defined below:

Activity	Total
Construction	\$80,482,742.00
Engineering	\$12,072,411.30
Administration	\$5,321,921.00
Total	\$97,877,074.30

This project is being proposed as a multijurisdictional application between Fort Bend County, Galveston County, and Brazoria County due to the regional impact and location of project beneficiaries. The Application will be led by Fort Bend County with the support of Galveston County and Brazoria County. Fort Bend County will assume sole responsibility of the 1% match/local leverage for the proposed project, therefore Galveston County nor Brazoria County will be obligated to any financial commitment.

This material is to guide discussion about this proposed project and not intended to serve as the final authorization of the project. This information will serve as a substantially complete application and will be posted for a minimum 14-day public comment period prior to the official authorization and submission of an application.

Respectfully,



Patrick K. Wiltshire
President and CEO

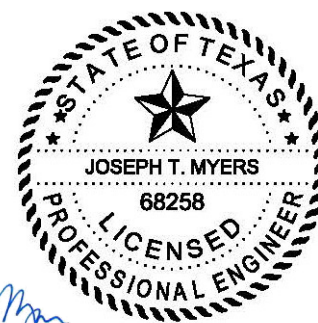
Memorandum

DATE: October 1, 2020

TO: Mark Vogler
General Manager/Chief Engineer
Fort Bend County Drainage District

FROM: Joseph T. Myers, P.E., CFM

SUBJECT: Erosion Repair of the Brazos River
Protection of the US 99 and US 59/I-69 Bridges
Fort Bend County Application for CDBG-MIT Funding



A handwritten signature in blue ink that reads "Joseph T. Myers".

Huitt-Zollars Inc.
Firm Registration No. F-761

Project Site & Description: Evacuation Route Protection

Due to the accelerated bank erosion on the Brazos River following significant flooding in 2015, 2016 and Hurricane Harvey in 2017, the Fort Bend County Drainage District conducted geomorphologic studies of the meander migration and bank erosion at thirty (30) selected locations along the eighty nine (89) miles of the Brazos River in Fort Bend County, Texas. These selected locations focused on government infrastructure to include roads, levees, bridges, buildings and parklands along the river. The results of these studies are most disturbing. In less than 30 years, continuing erosion of the riverbank may cause loss of human life while threatening residences, roads, levees and Hurricane Evacuation Routes on Farm to Market Roads, State Highways and Interstate bridges.

Project Brazos, a multi-jurisdictional effort to address riverbank erosion, has identified bank erosion at thirteen (13) of the most critical sites along the Brazos River in Fort Bend County. However the most critical component of the project is the protection of the SH 99 and US 59/I-69 corridors. The erosion at these two locations is threatening the bridges over the Brazos River and the safe evacuation of hundreds of thousands of residents from Galveston and Brazoria Counties during times of high winds and storm surge from hurricanes and tropical storms. The Project is a regional approach with broad support from local, state and federal stakeholders to include TxDOT, the Brazos River Authority and the USACE - Galveston District and its Engineer Research and Development Center (ERDC) in Vicksburg, Mississippi. Currently, fourteen (14) Resolutions and a Letter of Support have been received supporting Project Brazos. Over the past four years, Fort Bend County Drainage District and the City of Sugar Land have invested time and money into understanding the problem and in developing feasible solutions to address it. Project Brazos employs an environmentally friendly repair using a longitudinal stone dike along the toe of the bank with stone tiebacks constructed at around 200 feet on center to protect the upstream and downstream portions of the repair from being flanked by the erosion. This repair method was coordinated with USACE ERDC's River and Estuarine Engineering Branch. In addition, this repair method promotes revegetation and habitat development and is in accordance with USACE's "Engineering With Nature Initiative".

These projects will provide significant benefits to the safe evacuation of residents of Galveston and Brazoria Counties during hurricane and tropical storm evacuations.

Beneficiary:

The beneficiaries of this project will be the hundreds of thousands of residents in Galveston and Brazoria Counties that depend on open and safe evacuation routes prior to land fall of hurricanes and tropical storms that frequent the upper Texas Gulf Coast. Based on the available census data, 271,450 residents of both Galveston and Brazoria Counties, of which 51.17% are considered Low-to-Moderate Income (LMI) persons, will benefit from the project (see attached LMISD data).

The northern boundary of the benefit area is demarked by the northern most evacuation zone associated to hurricanes and tropical storms as determined by the Houston-Galveston Area Council of Governments (HGAC) in conjunction with the Texas Department of Public Safety (DPS). These zones are determined by zip code and can be referenced by the attached HGAC Hurricane Evacuation Zip Zones map. The evacuation zip zones stop at the Fort Bend County line; thus, the primary beneficiaries are the residents to the south of this area to include Brazoria and Galveston Counties.

The eastern boundary is demarked by the drive time proximity of residents to SH 6 route out of the City of Galveston and within both Galveston and Brazoria Counties. This is one of three (3) routes available to the residents of Galveston and the only one that does not go through a heavily populated region such as the City of Houston. It is believed that most residents will take the SH 6 route (see drive-time analysis exhibit for Highway 6) during periods of mandatory evacuation. SH 6 goes directly through the Cities of Hitchcock, Santa Fe, Alvin, Manvel, the southern portion of Pearland, and other smaller cities along the way. Additionally, communities located east of SH 6, including the City of La Marque, southeastern portion of Friendswood are expected to take the SH 6 evacuation route. Based on the drive time analysis we believe all of these locations would prefer to avoid the traffic they will certainly encounter along the major evacuation route of I-45 through the City of Houston. The SH 6 route proceeds northwest to the City of Sugar Land and the intersection of US 59. From there the route goes south to SH 99 and ultimately north on SH 99 to I-10 and points west away from the harmful impacts of the oncoming hurricane or rainfall of a tropical storm.

The western boundary is demarked by the Brazos River which meanders south splitting two other major thoroughfares - Highway 36 and SH 288. It is believed that the river will act as a physical deterrent of traffic evacuation traffic during a major disaster event. This claim can be supported due to the recent disasters which have seen both hurricane landfall and tropical storm rainfall impacts (Hurricane Harvey, 2017). Communities along this western most boundary, including portions of Freeport, the Cities of Lake Jackson, Angleton, and other smaller communities, will most likely travel SH 288 northwest to the confluence of SH 6 where they will continue north east along this route eventually traveling along the US 59/I-69 route and ultimately to SH 99.

Mitigation:

Along this evacuation route are the bridges of SH 99 and US 59/I-69 over the Brazos River. These bridges have already suffered some level of erosion damage from the Brazos River from past storms and natural disasters. The US 59/I-69 turnaround at the Brazos River was closed after the flood disasters of 2016 and Hurricane Harvey due to a portion of the turnaround being washed away. The Texas Department of Transportation (TxDOT) had attempted to shore up the area with a structural solution only to have that solution wash partially away during Hurricane Harvey. The Brazos River is constantly working in the bridge components and worked its way around the structure installed by the TxDOT. The Brazos River solution must be more pragmatic and address the area upstream and downstream to ensure the bridges are adequately protected. In an attempt to address this concern, TxDOT is designing new bridges but they are limited to their right-of-way and will only build longer bridges. However, the construction of longer bridges does not ensure protection of the evacuation route from future riverbank erosion.

By way of example, during Hurricane Harvey, the US 59/I-69 bridge over the San Jacinto River was compromised when the river washed out material around the footings of the interior bridge supports. This significantly impacted the population seeking safety from the storm as well as first responders and emergency personnel to respond. In an effort to avoid this tragic situation, the proposed solution to stabilize the Brazos River will ensure significant changes in the river are controlled, thus avoiding the issues experienced on US 59 over the San Jacinto River.

Should any portion of either of the US 59/I-69 or SH 99 bridges become compromised due to river bank erosion, in future incidents in which evacuations from the coast are called for, the evacuation route itself could become comprised, putting lives in danger.

Project Schedule:

Fort Bend County has properly procured the services of a Grant Administrator and Project Engineering Firm to properly execute the project. Upon the authorization to proceed, the Engineering will begin with the performance of Surveying and Geotechnical Investigations. There will be an in-depth hydrologic and hydraulic study performed to finalize the design and ensure all floodplain regulations of Fort Bend County are properly followed. Findings of these investigations and studies will be memorialized in a study document. The design phase is anticipated to take approximately 14 months. During this phase the project will be coordinated with local, state and federal partners to ensure all permits are properly obtained. Upon the permitting of the project, the bidding phase will take approximately 2 months and will follow all County, state and federal procurement requirements. Construction will take approximately 19 months to complete. The engineering firm will participate in the review of all construction related documentation.



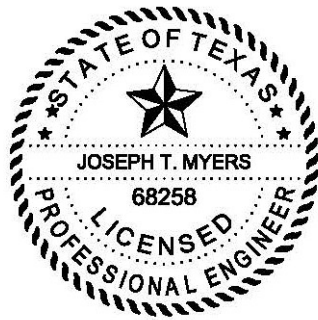
CDBG-MIT: Budget Justification of Retail Costs (Former Table 2)

Cost Verification Controls must be in place to assure that construction costs are reasonable and consistent with market costs at the time and place of construction.

Applicant/Subrecipient:		Fort Bend County					
Site/Activity Title:		Protection of Evacuation Route - US 99 / US 59					
Eligible Activity:		Erosion Protection of the Brazos River					
Materials/Facilities/Services	\$/Unit	Unit	Quantity	Construction	Acquisition	Total	
Site Preparation	\$ 5,100,000.00	LS	1	\$ 5,100,000.00	\$ -	\$ 5,100,000.00	
Clearing and Grubbing	\$ 6,000.00	EA	47	\$ 282,000.00	\$ -	\$ 282,000.00	
Excavation	\$ 36.00	CY	16222	\$ 583,992.00	\$ -	\$ 583,992.00	
Stone Toe Dike	\$ 250.00	EA	280000	\$70,000,000.00	\$ -	\$ 70,000,000.00	
Stone Tie Backs	\$ 250.00	EA	18067	\$ 4,516,750.00	\$ -	\$ 4,516,750.00	
Engineering	\$ 1.00	LS	12072411	\$12,072,411.30	\$ -	\$ 12,072,411.30	
	\$ -		0	\$ -	\$ -	\$ -	
	\$ -		0	\$ -	\$ -	\$ -	
	\$ -		0	\$ -	\$ -	\$ -	
	\$ -		0	\$ -	\$ -	\$ -	
	\$ -		0	\$ -	\$ -	\$ -	
TOTAL	\$ 5,106,537.00			\$92,555,153.30	\$ -	\$ 92,555,153.30	

1. Identify and explain the annual projected operation and maintenance costs associated with the proposed activities.
 Annual projected operation and maintenance costs will be less than \$50,000. This cost will include annual inspections and post storm event inspections. Periodically the stone used for the erosion project will be replenished and funded through the Capital Improvement Program. No annual replenishment of the stone will be required.

2. Identify and explain any special engineering activities.
 N/A

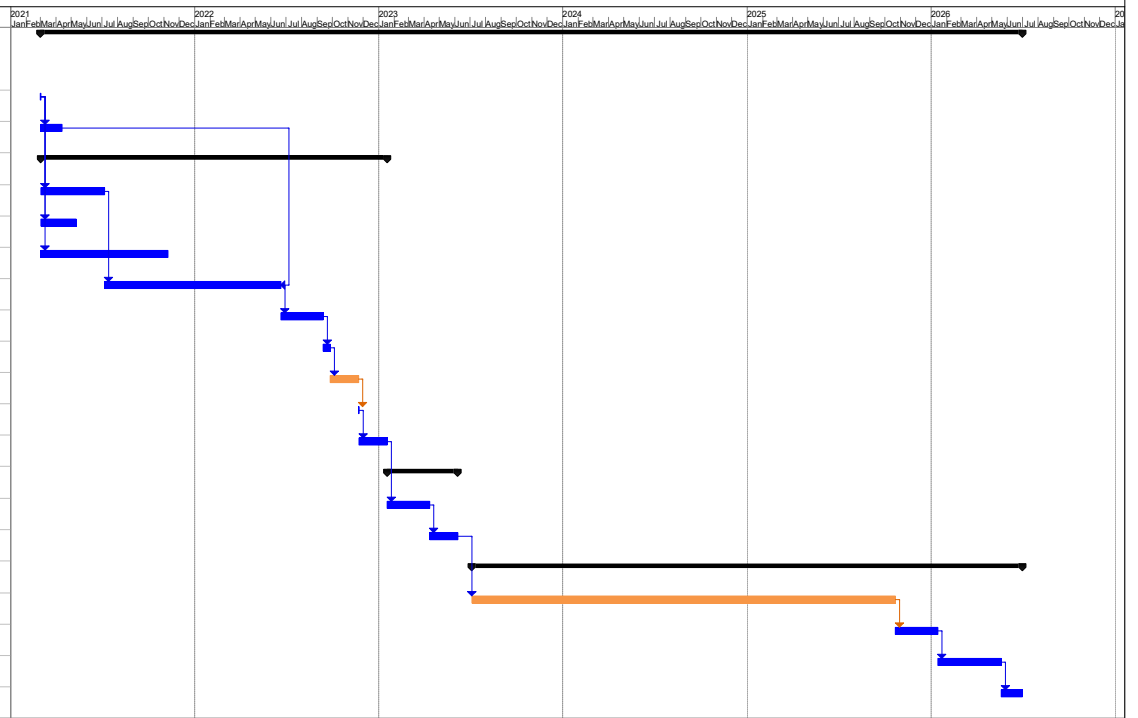


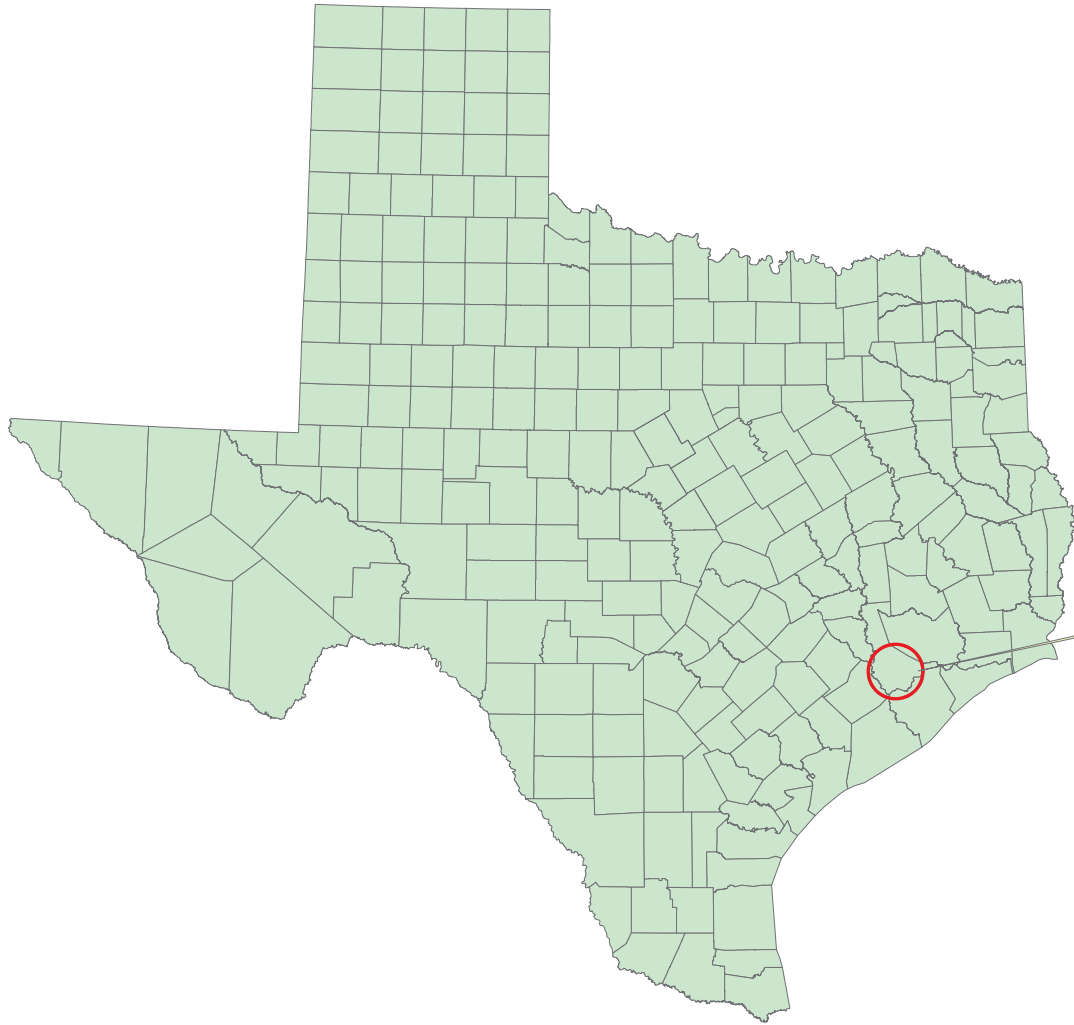
Seal

Date:	9/24/2020
Phone Number:	281-496-0066

**Signature of Registered Engineer/Architect
Responsible For Budget Justification:**

ID	Task Name	Duration	Start	Finish	Predecessors
1	Fort Bend County CDBG-MIT Project - Evacuation Route Protection	1392 days	Mon 3/1/21	Tue 6/30/26	
2	Notice to Proceed	1 day	Mon 3/1/21	Mon 3/1/21	
3	Environmental Clearance	30 days	Tue 3/2/21	Mon 4/12/21	2
4	Design Phase	491 days	Tue 3/2/21	Tue 1/17/23	
5	Topographical Survey	90 days	Tue 3/2/21	Mon 7/5/21	4
6	Geotechnical Investigation and Report	50 days	Tue 3/2/21	Mon 5/10/21	4
7	H&H Investigation and Report	180 days	Tue 3/2/21	Mon 11/8/21	4
8	Prepare Preliminary Plans and Specs	250 days	Tue 7/6/21	Mon 6/20/22	5,3,6,7
9	Submit Preliminary Plans and Specs to County for Approval	60 days	Tue 6/21/22	Mon 9/12/22	8
10	County Approval of Preliminary P&S	10 days	Tue 9/13/22	Mon 9/26/22	9
11	Prepare Final Plans and Specs	40 days	Tue 9/27/22	Mon 11/21/22	10
12	Submit to Regulatory Agencies for Approval	1 day	Tue 11/22/22	Tue 11/22/22	11
13	Regulatory Agency Approval of Final P&S	40 days	Wed 11/23/22	Tue 1/17/23	12
14	Bidding Phase	100 days	Wed 1/18/23	Tue 6/6/23	
15	Assist County with Bidding Services	60 days	Wed 1/18/23	Tue 4/11/23	14
16	Award Construction Contract	40 days	Wed 4/12/23	Tue 6/6/23	15
17	Construction Phase	780 days	Wed 7/5/23	Tue 6/30/26	
18	Perform Construction Administration	600 days	Wed 7/5/23	Tue 10/21/25	17,16FS+20 days
19	Construction Complete	60 days	Wed 10/22/25	Tue 1/13/26	18
20	Final Close out Assessment and As-Built Drawings	90 days	Wed 1/14/26	Tue 5/19/26	19
21	Final Inspection and Acceptance by the County	30 days	Wed 5/20/26	Tue 6/30/26	20

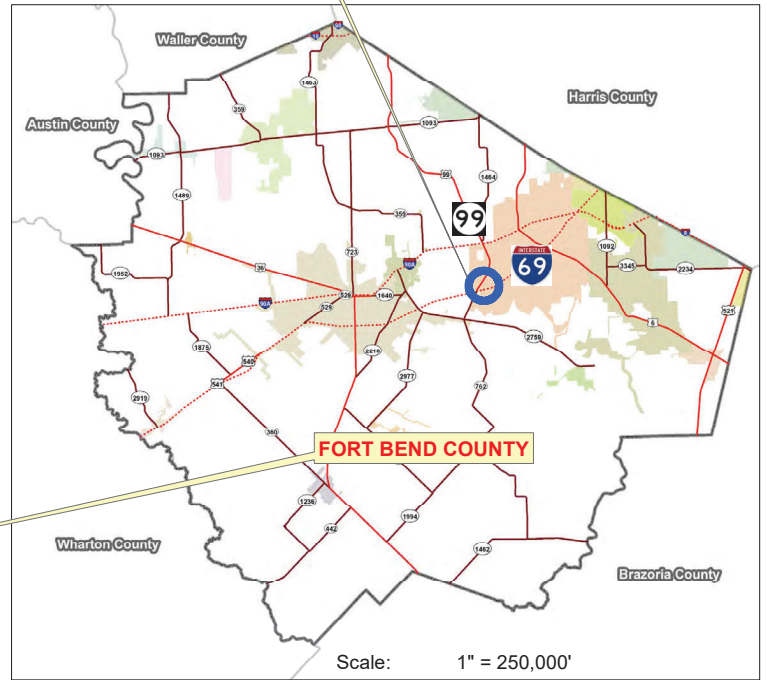




TEXAS



PROJECT LOCATION



Scale: 1" = 250,000'

Legend

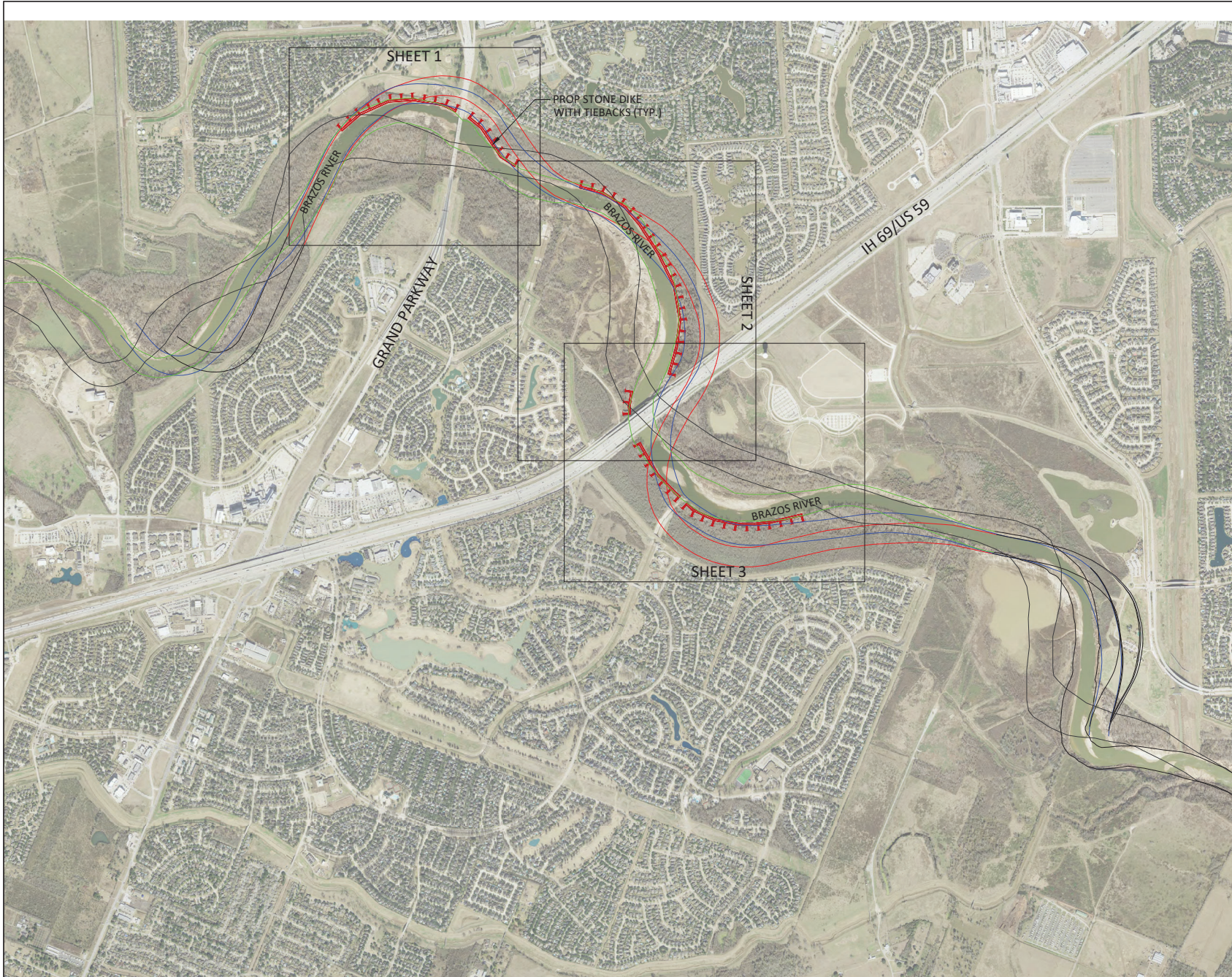
- StratMap_County_poly



**BRAZOS RIVER- FORT BEND COUNTY
STONE EROSION PROTECTION**

Scale: 1" = 2,500,000'
 Drawn by: JG
 Date: 05/21/2019

**VICINITY MAP
SHEET 1 / 6**



LEGEND

- RIVER ALIGNMENT 1953 (ACT)
- RIVER ALIGNMENT 2016 (ACT)
- 2048 RIVER PROJECTION 1
- 2048 RIVER PROJECTION 2

PRELIMINARY
 NOT FOR CONSTRUCTION,
 BIDDING, OR PERMIT PURPOSES.
 FOR REVIEW ONLY.

HUITT-ZOLLARS, INC.
 Consulting Engineers

DATE	DESCRIPTION	REV. No.

OVERALL VIEW
 SITES 1-3

**BRAZOS RIVER
 STONE EROSION PROTECTION**

FORT BEND COUNTY,
 TEXAS

	SCALE	SHEET
	1" = NTS	2
DATE	6	
09/23/2020		



LEGEND

- RIVER ALIGNMENT 1953 (ACT)
- RIVER ALIGNMENT 2016 (ACT)
- 2048 RIVER PROJECTION 1
- 2048 RIVER PROJECTION 2

PRELIMINARY
 NOT FOR CONSTRUCTION,
 BIDDING, OR PERMIT PURPOSES.
 FOR REVIEW ONLY.

HUITT-ZOLLARS, INC.
 Consulting Engineers

DATE	DESCRIPTION	REV. No.

REVISIONS AND ISSUE DATES

SITE 1
 FORT BEND COUNTY LID 7-
 3500 LF STONE DIKE

**BRAZOS RIVER
 STONE EROSION PROTECTION**

FORT BEND COUNTY,
 TEXAS

	SCALE	SHEET
	1" = 100'	3 / 6
DATE	09/23/2020	



- LEGEND**
- RIVER ALIGNMENT 1953 (ACT)
 - RIVER ALIGNMENT 2016 (ACT)
 - 2048 RIVER PROJECTION 1
 - 2048 RIVER PROJECTION 2

PRELIMINARY
 NOT FOR CONSTRUCTION,
 BIDDING, OR PERMIT PURPOSES.
 FOR REVIEW ONLY.

HUITT-ZOLLARS, INC.
 Consulting Engineers

DATE	DESCRIPTION	REV. No.
REVISIONS AND ISSUE DATES		

SITE 2
 FORT BEND COUNTY LID 17 & IH69
 BRIDGE-4200 LF STONE DIKE

BRAZOS RIVER
STONE EROSION PROTECTION
 FORT BEND COUNTY,
 TEXAS

<p>HUITT-ZOLLARS, INC. 10302 Richmond Ave., Suite 200 Houston, Texas 77042 Phone (281) 496-0066</p>	SCALE 1" = 100' DATE 09/23/2020	SHEET 4 6
--	--	-----------------



- LEGEND**
- RIVER ALIGNMENT 1953 (ACT)
 - RIVER ALIGNMENT 2016 (ACT)
 - 2048 RIVER PROJECTION 1
 - 2048 RIVER PROJECTION 2

PRELIMINARY
 NOT FOR CONSTRUCTION,
 BIDDING, OR PERMIT PURPOSES.
 FOR REVIEW ONLY.

HUITT-ZOLLARS, INC.
 Consulting Engineers

DATE	DESCRIPTION	REV. No.

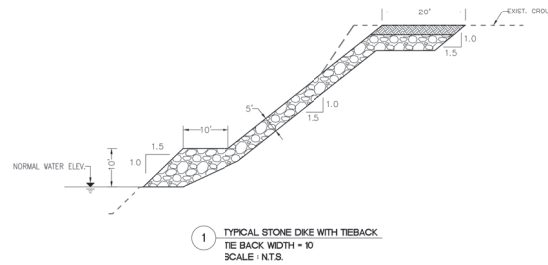
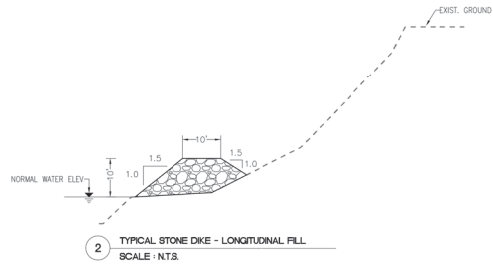
DATE DESCRIPTION REVISIONS AND ISSUE DATES REV. No.

SITE 2
 FORT BEND COUNTY LID 11
 3800 LF STONE DIKE

BRAZOS RIVER
 STONE EROSION PROTECTION

FORT BEND COUNTY,
 TEXAS

	SCALE	SHEET
	1" = 100'	5 / 6
HUITT-ZOLLARS, INC. 10300 Richmond Ave., Suite 200 Houston, Texas 77042 Phone (281) 486-0066	DATE	09/23/2020



PRELIMINARY
NOT FOR CONSTRUCTION,
BIDDING, OR PERMIT PURPOSES.
FOR REVIEW ONLY.

HUITT-ZOLLARS, INC.
Consulting Engineers

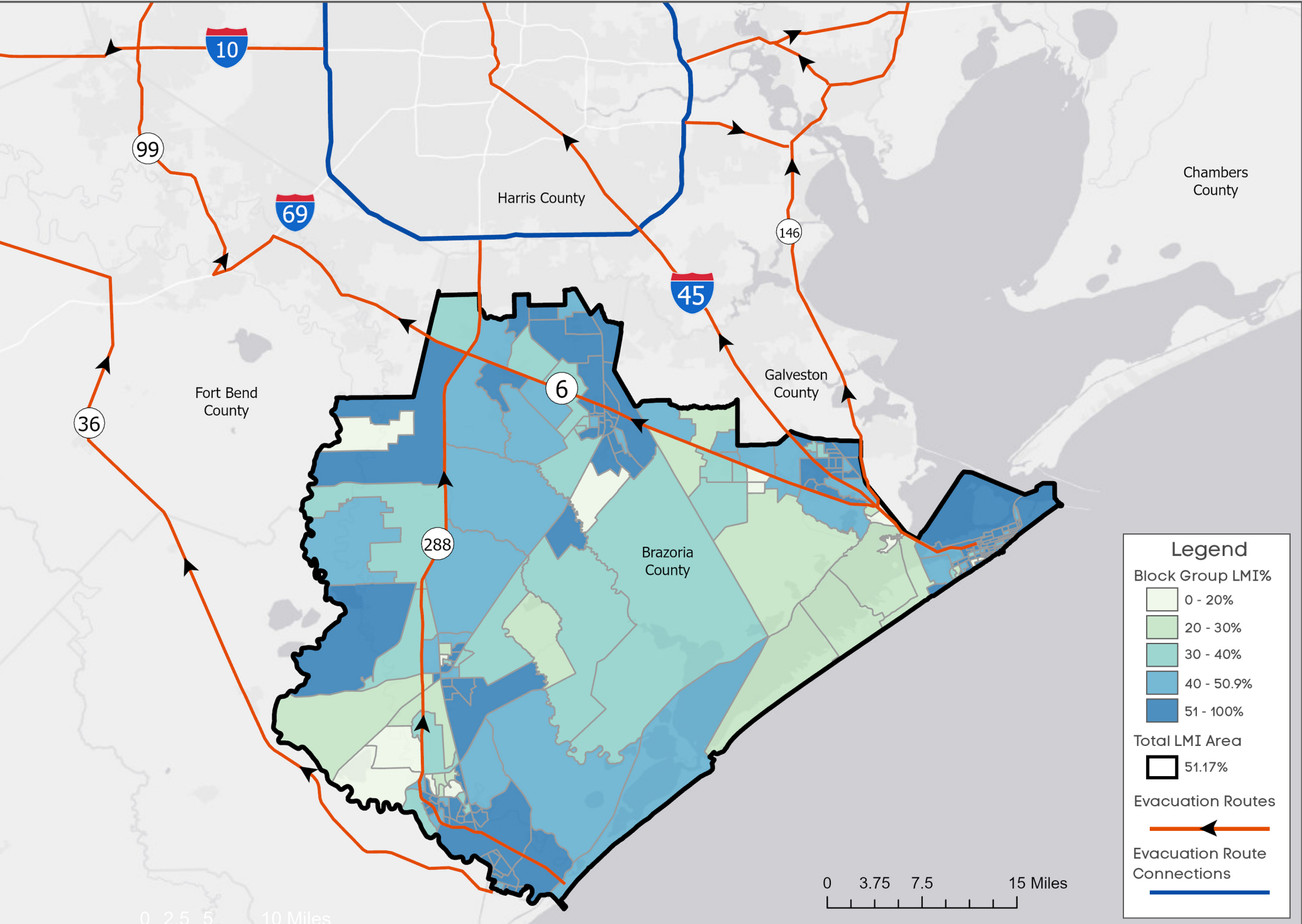
DATE	DESCRIPTION	REV. No.

REVISIONS AND ISSUE DATES

STONE DIKE DETAILS

BRAZOS RIVER
STONE EROSION PROTECTION
FORT BEND COUNTY,
TEXAS

HUITT-ZOLLARS <small>HUITT-ZOLLARS, INC. 10302 Richmond Ave., Suite 200 Houston, Texas 77062 Phone (281) 486-0066</small>	SCALE	SHEET
	1" = N.T.S.	6
DATE	09/23/2020	
	6	



Legend

Block Group LMI%

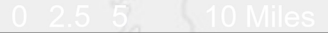
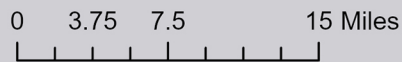
- 0 - 20%
- 20 - 30%
- 30 - 40%
- 40 - 50.9%
- 51 - 100%

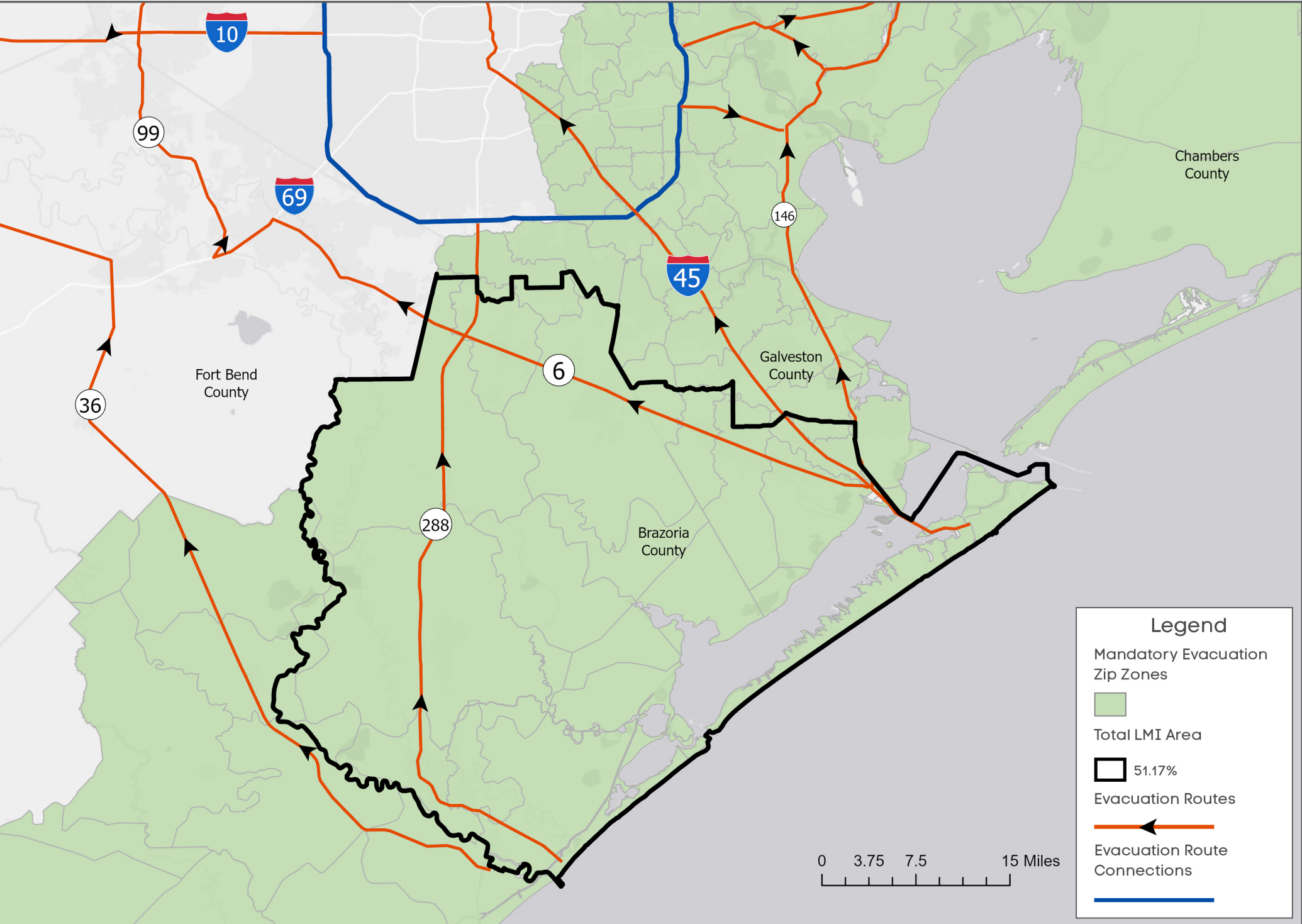
Total LMI Area

- 51.17%

Evacuation Routes

Evacuation Route Connections

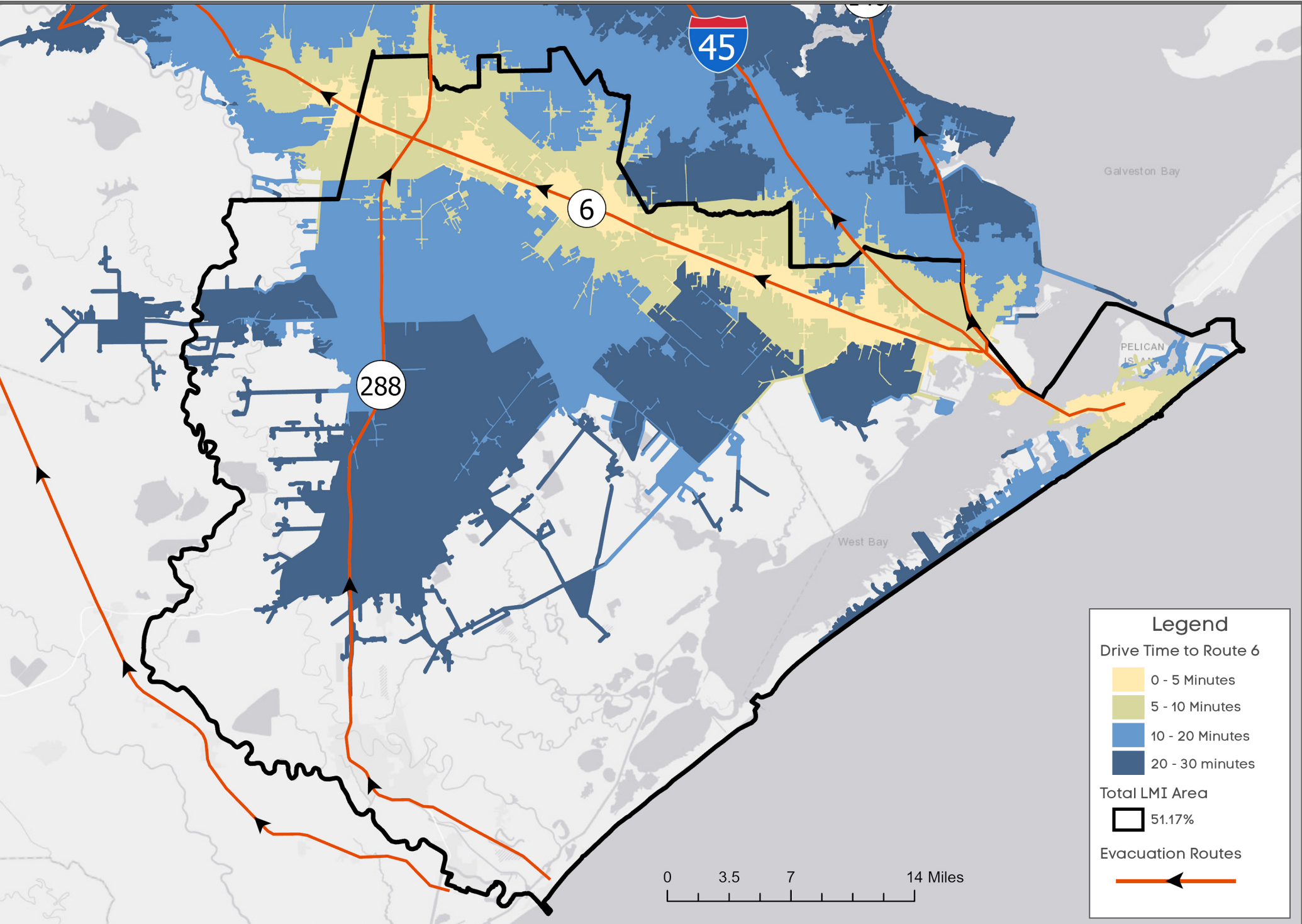




Legend

- Mandatory Evacuation Zip Zones
- Total LMI Area
- 51.17%
- Evacuation Routes
- Evacuation Route Connections





Legend

Drive Time to Route 6

- 0 - 5 Minutes
- 5 - 10 Minutes
- 10 - 20 Minutes
- 20 - 30 minutes

Total LMI Area

- 51.17%

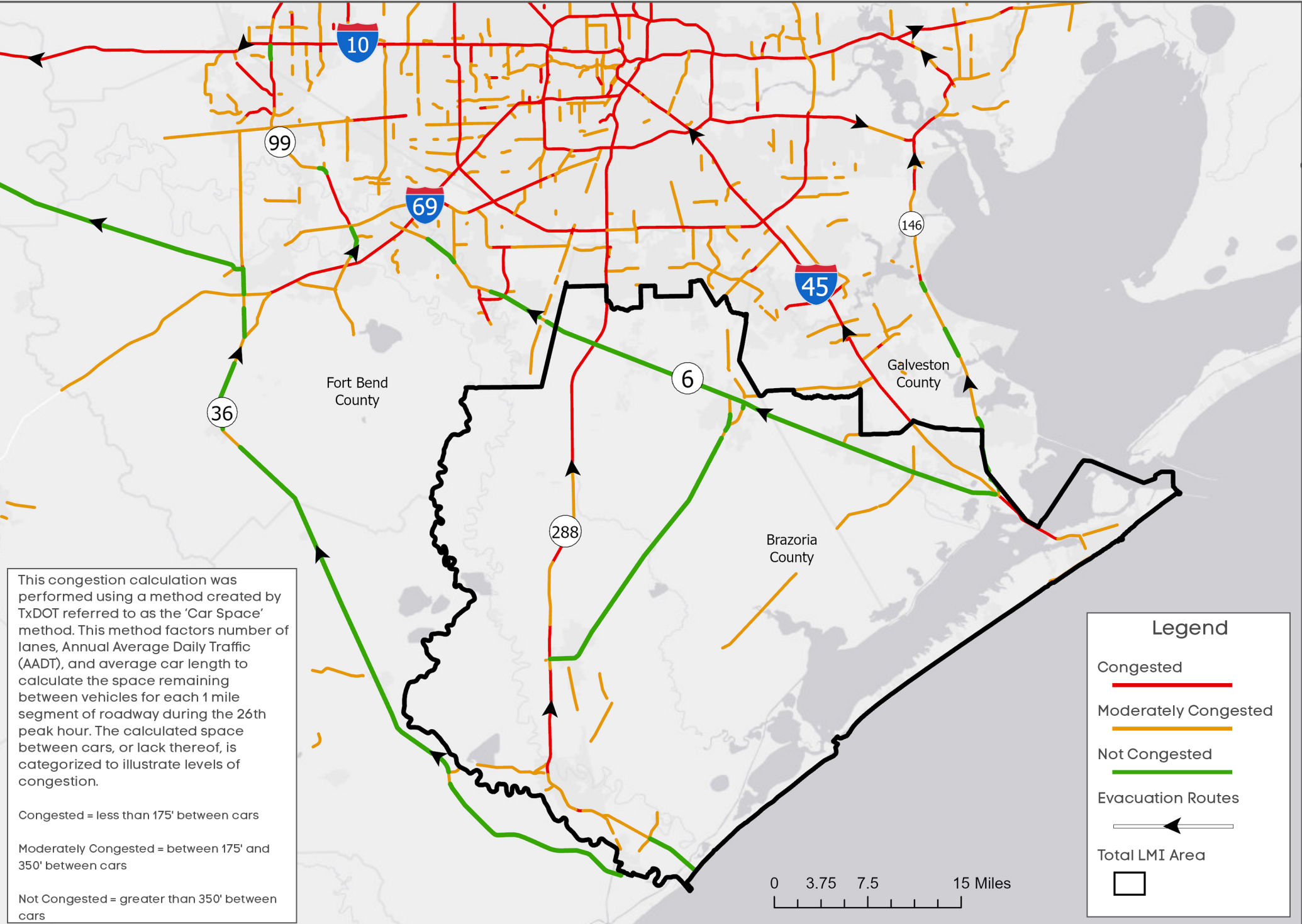
Evacuation Routes

- ←

0 3.5 7 14 Miles

Drive Time Analysis





This congestion calculation was performed using a method created by TxDOT referred to as the 'Car Space' method. This method factors number of lanes, Annual Average Daily Traffic (AADT), and average car length to calculate the space remaining between vehicles for each 1 mile segment of roadway during the 26th peak hour. The calculated space between cars, or lack thereof, is categorized to illustrate levels of congestion.

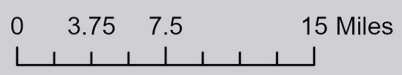
Congested = less than 175' between cars

Moderately Congested = between 175' and 350' between cars

Not Congested = greater than 350' between cars

Legend

- Congested —
- Moderately Congested —
- Not Congested —
- Evacuation Routes
- Total LMI Area



Fort Bend County Harvey Mitigation Project

GEOID	geoname	Stusab	Countyname	State	County	Tract	Bkclgrp	Low	Lowmod	Lowmoduniv	Lowmod_pct
15000US480396607021	Block Group 1, Census Tract 6607.02, Brazoria County, Texas	TX	Brazoria County	48	39	660702	1	450	595	1340	44.40%
15000US480396607023	Block Group 3, Census Tract 6607.02, Brazoria County, Texas	TX	Brazoria County	48	39	660702	3	1305	1500	2070	72.46%
15000US480396615011	Block Group 1, Census Tract 6615.01, Brazoria County, Texas	TX	Brazoria County	48	39	661501	1	415	885	2005	44.14%
15000US480396642003	Block Group 3, Census Tract 6642, Brazoria County, Texas	TX	Brazoria County	48	39	664200	3	215	345	730	47.26%
15000US480396616011	Block Group 1, Census Tract 6616.01, Brazoria County, Texas	TX	Brazoria County	48	39	661601	1	515	545	840	64.88%
15000US480396622001	Block Group 1, Census Tract 6622, Brazoria County, Texas	TX	Brazoria County	48	39	662200	1	210	510	1180	43.22%
15000US480396623002	Block Group 2, Census Tract 6623, Brazoria County, Texas	TX	Brazoria County	48	39	662300	2	850	1045	1430	73.08%
15000US480396634001	Block Group 1, Census Tract 6634, Brazoria County, Texas	TX	Brazoria County	48	39	663400	1	640	1090	2855	38.18%
15000US480396633001	Block Group 1, Census Tract 6633, Brazoria County, Texas	TX	Brazoria County	48	39	663300	1	110	210	395	53.16%
15000US480396622004	Block Group 4, Census Tract 6622, Brazoria County, Texas	TX	Brazoria County	48	39	662200	4	535	830	1675	49.55%
15000US480396615013	Block Group 3, Census Tract 6615.01, Brazoria County, Texas	TX	Brazoria County	48	39	661501	3	400	715	1800	39.72%
15000US480396635004	Block Group 4, Census Tract 6635, Brazoria County, Texas	TX	Brazoria County	48	39	663500	4	250	870	1675	51.94%
15000US480396640002	Block Group 2, Census Tract 6640, Brazoria County, Texas	TX	Brazoria County	48	39	664000	2	425	695	1475	47.12%
15000US480396616022	Block Group 2, Census Tract 6616.02, Brazoria County, Texas	TX	Brazoria County	48	39	661602	2	775	1115	1900	58.68%
15000US480396631002	Block Group 2, Census Tract 6631, Brazoria County, Texas	TX	Brazoria County	48	39	663100	2	225	520	1335	38.95%
15000US480396609003	Block Group 3, Census Tract 6609, Brazoria County, Texas	TX	Brazoria County	48	39	660900	3	1485	1725	2475	69.70%
15000US480396609004	Block Group 4, Census Tract 6609, Brazoria County, Texas	TX	Brazoria County	48	39	660900	4	1100	1685	1810	93.09%
15000US480396643004	Block Group 4, Census Tract 6643, Brazoria County, Texas	TX	Brazoria County	48	39	664300	4	395	425	575	73.91%
15000US480396614004	Block Group 4, Census Tract 6614, Brazoria County, Texas	TX	Brazoria County	48	39	661400	4	400	845	1035	81.64%
15000US480396624004	Block Group 4, Census Tract 6624, Brazoria County, Texas	TX	Brazoria County	48	39	662400	4	175	285	1065	26.76%
15000US480396642001	Block Group 1, Census Tract 6642, Brazoria County, Texas	TX	Brazoria County	48	39	664200	1	315	485	710	68.31%
15000US480396614001	Block Group 1, Census Tract 6614, Brazoria County, Texas	TX	Brazoria County	48	39	661400	1	170	295	795	37.11%
15000US480396638003	Block Group 3, Census Tract 6638, Brazoria County, Texas	TX	Brazoria County	48	39	663800	3	660	795	1370	58.03%
15000US480396621003	Block Group 3, Census Tract 6621, Brazoria County, Texas	TX	Brazoria County	48	39	662100	3	810	1365	2800	48.75%
15000US480396622003	Block Group 3, Census Tract 6622, Brazoria County, Texas	TX	Brazoria County	48	39	662200	3	520	825	1360	60.66%
15000US480396623001	Block Group 1, Census Tract 6623, Brazoria County, Texas	TX	Brazoria County	48	39	662300	1	75	200	1155	17.32%
15000US480396623003	Block Group 3, Census Tract 6623, Brazoria County, Texas	TX	Brazoria County	48	39	662300	3	105	380	1265	30.04%
15000US480396623004	Block Group 4, Census Tract 6623, Brazoria County, Texas	TX	Brazoria County	48	39	662300	4	540	755	1065	70.89%
15000US480396624001	Block Group 1, Census Tract 6624, Brazoria County, Texas	TX	Brazoria County	48	39	662400	1	255	645	1380	46.74%
15000US480396637001	Block Group 1, Census Tract 6637, Brazoria County, Texas	TX	Brazoria County	48	39	663700	1	845	1310	2485	52.72%
15000US480396638002	Block Group 2, Census Tract 6638, Brazoria County, Texas	TX	Brazoria County	48	39	663800	2	265	540	1470	36.73%
15000US480396639001	Block Group 1, Census Tract 6639, Brazoria County, Texas	TX	Brazoria County	48	39	663900	1	410	590	960	61.46%
15000US480396641002	Block Group 2, Census Tract 6641, Brazoria County, Texas	TX	Brazoria County	48	39	664100	2	525	785	785	100.00%
15000US480396639002	Block Group 2, Census Tract 6639, Brazoria County, Texas	TX	Brazoria County	48	39	663900	2	615	750	1000	75.00%
15000US480396640001	Block Group 1, Census Tract 6640, Brazoria County, Texas	TX	Brazoria County	48	39	664000	1	755	945	1450	65.17%
15000US480396641001	Block Group 1, Census Tract 6641, Brazoria County, Texas	TX	Brazoria County	48	39	664100	1	835	975	1335	73.03%
15000US480396625002	Block Group 2, Census Tract 6625, Brazoria County, Texas	TX	Brazoria County	48	39	662500	2	300	685	910	75.27%
15000US480396641003	Block Group 3, Census Tract 6641, Brazoria County, Texas	TX	Brazoria County	48	39	664100	3	290	605	1045	57.89%
15000US480396624002	Block Group 2, Census Tract 6624, Brazoria County, Texas	TX	Brazoria County	48	39	662400	2	185	415	1175	35.32%
15000US480396642002	Block Group 2, Census Tract 6642, Brazoria County, Texas	TX	Brazoria County	48	39	664200	2	290	385	580	66.38%
15000US480396643001	Block Group 1, Census Tract 6643, Brazoria County, Texas	TX	Brazoria County	48	39	664300	1	1620	1780	2025	87.90%
15000US480396643002	Block Group 2, Census Tract 6643, Brazoria County, Texas	TX	Brazoria County	48	39	664300	2	420	565	715	79.02%
15000US480396643003	Block Group 3, Census Tract 6643, Brazoria County, Texas	TX	Brazoria County	48	39	664300	3	720	1080	1385	77.98%
15000US480396643005	Block Group 5, Census Tract 6643, Brazoria County, Texas	TX	Brazoria County	48	39	664300	5	445	540	1005	53.73%
15000US480396644001	Block Group 1, Census Tract 6644, Brazoria County, Texas	TX	Brazoria County	48	39	664400	1	380	380	430	88.37%
15000US480396644006	Block Group 6, Census Tract 6644, Brazoria County, Texas	TX	Brazoria County	48	39	664400	6	180	545	1175	46.38%
15000US480396644005	Block Group 5, Census Tract 6644, Brazoria County, Texas	TX	Brazoria County	48	39	664400	5	325	430	665	64.66%
15000US480396633002	Block Group 2, Census Tract 6633, Brazoria County, Texas	TX	Brazoria County	48	39	663300	2	260	335	570	58.77%
15000US480396615022	Block Group 2, Census Tract 6615.02, Brazoria County, Texas	TX	Brazoria County	48	39	661502	2	435	725	1430	50.70%
15000US480396617002	Block Group 2, Census Tract 6617, Brazoria County, Texas	TX	Brazoria County	48	39	661700	2	185	280	730	38.36%
15000US480396641004	Block Group 4, Census Tract 6641, Brazoria County, Texas	TX	Brazoria County	48	39	664100	4	445	790	1305	60.54%
15000US480396637002	Block Group 2, Census Tract 6637, Brazoria County, Texas	TX	Brazoria County	48	39	663700	2	95	245	1045	23.44%
15000US480396638001	Block Group 1, Census Tract 6638, Brazoria County, Texas	TX	Brazoria County	48	39	663800	1	785	1580	2495	63.33%
15000US480396610003	Block Group 3, Census Tract 6610, Brazoria County, Texas	TX	Brazoria County	48	39	661000	3	840	2155	3615	59.61%
15000US480396612003	Block Group 3, Census Tract 6612, Brazoria County, Texas	TX	Brazoria County	48	39	661200	3	1125	1685	2300	73.26%
15000US480396613001	Block Group 1, Census Tract 6613, Brazoria County, Texas	TX	Brazoria County	48	39	661300	1	225	485	700	69.29%
15000US480396613003	Block Group 3, Census Tract 6613, Brazoria County, Texas	TX	Brazoria County	48	39	661300	3	710	965	1235	78.14%
15000US480396631001	Block Group 1, Census Tract 6631, Brazoria County, Texas	TX	Brazoria County	48	39	663100	1	185	260	1160	22.41%
15000US480396614002	Block Group 2, Census Tract 6614, Brazoria County, Texas	TX	Brazoria County	48	39	661400	2	360	665	1520	43.75%
15000US480396614006	Block Group 6, Census Tract 6614, Brazoria County, Texas	TX	Brazoria County	48	39	661400	6	135	200	660	30.30%
15000US480396615012	Block Group 2, Census Tract 6615.01, Brazoria County, Texas	TX	Brazoria County	48	39	661501	2	530	900	1585	56.78%
15000US480396616012	Block Group 2, Census Tract 6616.01, Brazoria County, Texas	TX	Brazoria County	48	39	661601	2	560	985	1585	62.15%
15000US480396616013	Block Group 3, Census Tract 6616.01, Brazoria County, Texas	TX	Brazoria County	48	39	661601	3	190	295	730	40.41%
15000US480396616014	Block Group 4, Census Tract 6616.01, Brazoria County, Texas	TX	Brazoria County	48	39	661601	4	1165	1885	3130	60.22%
15000US480396631003	Block Group 3, Census Tract 6631, Brazoria County, Texas	TX	Brazoria County	48	39	663100	3	0	0	145	0.00%
15000US480396631004	Block Group 4, Census Tract 6631, Brazoria County, Texas	TX	Brazoria County	48	39	663100	4	100	390	2595	15.03%
15000US480396632001	Block Group 1, Census Tract 6632, Brazoria County, Texas	TX	Brazoria County	48	39	663200	1	195	595	1330	44.74%
15000US480396632002	Block Group 2, Census Tract 6632, Brazoria County, Texas	TX	Brazoria County	48	39	663200	2	350	795	1465	54.27%
15000US480396632003	Block Group 3, Census Tract 6632, Brazoria County, Texas	TX	Brazoria County	48	39	663200	3	115	225	2150	10.47%
15000US480396633003	Block Group 3, Census Tract 6633, Brazoria County, Texas	TX	Brazoria County	48	39	663300	3	485	680	1200	56.67%
15000US480396617003	Block Group 3, Census Tract 6617, Brazoria County, Texas	TX	Brazoria County	48	39	661700	3	245	410	620	66.13%
15000US480396619004	Block Group 4, Census Tract 6619, Brazoria County, Texas	TX	Brazoria County	48	39	661900	4	0	0	80	0.00%
15000US480396634002	Block Group 2, Census Tract 6634, Brazoria County, Texas	TX	Brazoria County	48	39	663400	2	575	735	860	85.47%
15000US480396634003	Block Group 3, Census Tract 6634, Brazoria County, Texas	TX	Brazoria County	48	39	663400	3	825	1020	1735	58.79%
15000US480396635003	Block Group 3, Census Tract 6635, Brazoria County, Texas	TX	Brazoria County	48	39	663500	3	170	305	690	44.20%
15000US480396635002	Block Group 2, Census Tract 6635, Brazoria County, Texas	TX	Brazoria County	48	39	663500	2	835	1175	1975	59.49%
15000US480396636001	Block Group 1, Census Tract 6636, Brazoria County, Texas	TX	Brazoria County	48	39	663600	1	140	310	1935	16.02%
15000US480396636002	Block Group 2, Census Tract 6636, Brazoria County, Texas	TX	Brazoria County	48	39	663600	2	160	235	1120	20.98%

15000US480396636003	Block Group 3, Census Tract 6636, Brazoria County, Texas	TX	Brazoria County	48	39	663600	3	265	450	2180	20.64%
15000US480396611001	Block Group 1, Census Tract 6611, Brazoria County, Texas	TX	Brazoria County	48	39	661100	1	690	970	1290	75.19%
15000US480396611002	Block Group 2, Census Tract 6611, Brazoria County, Texas	TX	Brazoria County	48	39	661100	2	570	1110	1990	55.78%
15000US480396612001	Block Group 1, Census Tract 6612, Brazoria County, Texas	TX	Brazoria County	48	39	661200	1	355	860	1310	65.65%
15000US480396612002	Block Group 2, Census Tract 6612, Brazoria County, Texas	TX	Brazoria County	48	39	661200	2	275	305	585	52.14%
15000US480396641005	Block Group 5, Census Tract 6641, Brazoria County, Texas	TX	Brazoria County	48	39	664100	5	405	530	1220	43.44%
15000US480396617001	Block Group 1, Census Tract 6617, Brazoria County, Texas	TX	Brazoria County	48	39	661700	1	250	435	1120	38.84%
15000US480396616021	Block Group 1, Census Tract 6616.02, Brazoria County, Texas	TX	Brazoria County	48	39	661602	1	115	130	985	13.20%
15000US480396618001	Block Group 1, Census Tract 6618, Brazoria County, Texas	TX	Brazoria County	48	39	661800	1	570	1340	3065	43.72%
15000US480396609001	Block Group 1, Census Tract 6609, Brazoria County, Texas	TX	Brazoria County	48	39	660900	1	300	495	970	51.03%
15000US480396609002	Block Group 2, Census Tract 6609, Brazoria County, Texas	TX	Brazoria County	48	39	660900	2	185	705	1715	41.11%
15000US480396610001	Block Group 1, Census Tract 6610, Brazoria County, Texas	TX	Brazoria County	48	39	661000	1	140	415	1145	36.24%
15000US480396610002	Block Group 2, Census Tract 6610, Brazoria County, Texas	TX	Brazoria County	48	39	661000	2	360	535	1755	30.48%
15000US480396602001	Block Group 1, Census Tract 6602, Brazoria County, Texas	TX	Brazoria County	48	39	660200	1	145	505	540	93.52%
15000US480396614005	Block Group 5, Census Tract 6614, Brazoria County, Texas	TX	Brazoria County	48	39	661400	5	1400	1500	2405	62.37%
15000US480396644004	Block Group 4, Census Tract 6644, Brazoria County, Texas	TX	Brazoria County	48	39	664400	4	800	1380	1615	85.45%
15000US480396619001	Block Group 1, Census Tract 6619, Brazoria County, Texas	TX	Brazoria County	48	39	661900	1	1600	3470	5270	65.84%
15000US480396615021	Block Group 1, Census Tract 6615.02, Brazoria County, Texas	TX	Brazoria County	48	39	661502	1	605	1060	3000	35.33%
15000US480396621002	Block Group 2, Census Tract 6621, Brazoria County, Texas	TX	Brazoria County	48	39	662100	2	125	325	815	39.88%
15000US480396618002	Block Group 2, Census Tract 6618, Brazoria County, Texas	TX	Brazoria County	48	39	661800	2	700	1525	3120	48.88%
15000US480396638004	Block Group 4, Census Tract 6638, Brazoria County, Texas	TX	Brazoria County	48	39	663800	4	480	550	715	76.92%
15000US480396619003	Block Group 3, Census Tract 6619, Brazoria County, Texas	TX	Brazoria County	48	39	661900	3	80	165	330	50.00%
15000US480396614003	Block Group 3, Census Tract 6614, Brazoria County, Texas	TX	Brazoria County	48	39	661400	3	405	515	565	91.15%
15000US480396624003	Block Group 3, Census Tract 6624, Brazoria County, Texas	TX	Brazoria County	48	39	662400	3	415	605	1895	31.93%
15000US480396613002	Block Group 2, Census Tract 6613, Brazoria County, Texas	TX	Brazoria County	48	39	661300	2	280	550	785	70.06%
15000US480396640003	Block Group 3, Census Tract 6640, Brazoria County, Texas	TX	Brazoria County	48	39	664000	3	900	1130	1165	97.00%
15000US480396634004	Block Group 4, Census Tract 6634, Brazoria County, Texas	TX	Brazoria County	48	39	663400	4	535	925	2040	45.34%
15000US480396644003	Block Group 3, Census Tract 6644, Brazoria County, Texas	TX	Brazoria County	48	39	664400	3	405	700	730	95.89%
15000US480396621001	Block Group 1, Census Tract 6621, Brazoria County, Texas	TX	Brazoria County	48	39	662100	1	985	1420	2090	67.94%
15000US480396625001	Block Group 1, Census Tract 6625, Brazoria County, Texas	TX	Brazoria County	48	39	662500	1	145	365	1515	24.09%
15000US480396606021	Block Group 1, Census Tract 6606.02, Brazoria County, Texas	TX	Brazoria County	48	39	660602	1	1440	3755	11585	32.41%
15000US480396622002	Block Group 2, Census Tract 6622, Brazoria County, Texas	TX	Brazoria County	48	39	662200	2	90	260	1205	21.58%
15000US480396635001	Block Group 1, Census Tract 6635, Brazoria County, Texas	TX	Brazoria County	48	39	663500	1	460	735	1750	42.00%
15000US480396619002	Block Group 2, Census Tract 6619, Brazoria County, Texas	TX	Brazoria County	48	39	661900	2	360	840	2330	36.05%
15000US481677235012	Block Group 2, Census Tract 7235.01, Galveston County, Texas	TX	Galveston County	48	167	723501	2	60	90	640	14.06%
15000US481677256004	Block Group 4, Census Tract 7256, Galveston County, Texas	TX	Galveston County	48	167	725600	4	425	690	905	76.24%
15000US481677228002	Block Group 2, Census Tract 7228, Galveston County, Texas	TX	Galveston County	48	167	722800	2	660	950	1430	66.43%
15000US481677241012	Block Group 2, Census Tract 7241.01, Galveston County, Texas	TX	Galveston County	48	167	724101	2	255	305	510	59.80%
15000US481677253001	Block Group 1, Census Tract 7253, Galveston County, Texas	TX	Galveston County	48	167	725300	1	415	915	1495	61.20%
15000US481677254001	Block Group 1, Census Tract 7254, Galveston County, Texas	TX	Galveston County	48	167	725400	1	85	350	710	49.30%
15000US481677254002	Block Group 2, Census Tract 7254, Galveston County, Texas	TX	Galveston County	48	167	725400	2	380	435	590	73.73%
15000US481677255001	Block Group 1, Census Tract 7255, Galveston County, Texas	TX	Galveston County	48	167	725500	1	35	45	300	15.00%
15000US481677255002	Block Group 2, Census Tract 7255, Galveston County, Texas	TX	Galveston County	48	167	725500	2	50	105	815	12.88%
15000US481677256003	Block Group 3, Census Tract 7256, Galveston County, Texas	TX	Galveston County	48	167	725600	3	320	625	1375	45.45%
15000US481677257002	Block Group 2, Census Tract 7257, Galveston County, Texas	TX	Galveston County	48	167	725700	2	180	385	1080	35.65%
15000US481677236003	Block Group 3, Census Tract 7236, Galveston County, Texas	TX	Galveston County	48	167	723600	3	125	395	1670	23.65%
15000US481677256001	Block Group 1, Census Tract 7256, Galveston County, Texas	TX	Galveston County	48	167	725600	1	190	275	355	77.46%
15000US481677253002	Block Group 2, Census Tract 7253, Galveston County, Texas	TX	Galveston County	48	167	725300	2	385	495	970	51.03%
15000US481677248001	Block Group 1, Census Tract 7248, Galveston County, Texas	TX	Galveston County	48	167	724800	1	270	435	875	49.71%
15000US481677251002	Block Group 2, Census Tract 7251, Galveston County, Texas	TX	Galveston County	48	167	725100	2	315	425	545	77.98%
15000US481677251003	Block Group 3, Census Tract 7251, Galveston County, Texas	TX	Galveston County	48	167	725100	3	205	255	540	47.22%
15000US481677252001	Block Group 1, Census Tract 7252, Galveston County, Texas	TX	Galveston County	48	167	725200	1	100	285	475	60.00%
15000US481677242003	Block Group 3, Census Tract 7242, Galveston County, Texas	TX	Galveston County	48	167	724200	3	510	810	1420	57.04%
15000US481677234002	Block Group 2, Census Tract 7234, Galveston County, Texas	TX	Galveston County	48	167	723400	2	235	505	1225	41.22%
15000US481677236002	Block Group 2, Census Tract 7236, Galveston County, Texas	TX	Galveston County	48	167	723600	2	350	575	1200	47.92%
15000US481677254004	Block Group 4, Census Tract 7254, Galveston County, Texas	TX	Galveston County	48	167	725400	4	280	470	670	70.15%
15000US481677233001	Block Group 1, Census Tract 7233, Galveston County, Texas	TX	Galveston County	48	167	723300	1	475	1085	2575	42.14%
15000US481677238002	Block Group 2, Census Tract 7238, Galveston County, Texas	TX	Galveston County	48	167	723800	2	70	115	875	13.14%
15000US481677260002	Block Group 2, Census Tract 7260, Galveston County, Texas	TX	Galveston County	48	167	726000	2	40	145	495	29.29%
15000US481677250002	Block Group 2, Census Tract 7250, Galveston County, Texas	TX	Galveston County	48	167	725000	2	240	385	530	72.64%
15000US481677244003	Block Group 3, Census Tract 7244, Galveston County, Texas	TX	Galveston County	48	167	724400	3	315	350	425	82.35%
15000US481677244004	Block Group 4, Census Tract 7244, Galveston County, Texas	TX	Galveston County	48	167	724400	4	440	515	700	73.57%
15000US481677245001	Block Group 1, Census Tract 7245, Galveston County, Texas	TX	Galveston County	48	167	724500	1	355	505	870	58.05%
15000US481677246001	Block Group 1, Census Tract 7246, Galveston County, Texas	TX	Galveston County	48	167	724600	1	175	220	220	100.00%
15000US481677247001	Block Group 1, Census Tract 7247, Galveston County, Texas	TX	Galveston County	48	167	724700	1	315	440	535	82.24%
15000US481677248002	Block Group 2, Census Tract 7248, Galveston County, Texas	TX	Galveston County	48	167	724800	2	410	560	600	93.33%
15000US481677249001	Block Group 1, Census Tract 7249, Galveston County, Texas	TX	Galveston County	48	167	724900	1	370	465	600	77.50%
15000US481677249002	Block Group 2, Census Tract 7249, Galveston County, Texas	TX	Galveston County	48	167	724900	2	220	400	775	51.61%
15000US481677249003	Block Group 3, Census Tract 7249, Galveston County, Texas	TX	Galveston County	48	167	724900	3	160	255	500	51.00%
15000US481677250001	Block Group 1, Census Tract 7250, Galveston County, Texas	TX	Galveston County	48	167	725000	1	390	500	845	59.17%
15000US481677250003	Block Group 3, Census Tract 7250, Galveston County, Texas	TX	Galveston County	48	167	725000	3	210	310	575	53.91%
15000US481677251001	Block Group 1, Census Tract 7251, Galveston County, Texas	TX	Galveston County	48	167	725100	1	155	340	595	57.14%
15000US481677227001	Block Group 1, Census Tract 7227, Galveston County, Texas	TX	Galveston County	48	167	722700	1	805	880	1230	71.54%
15000US481677227003	Block Group 3, Census Tract 7227, Galveston County, Texas	TX	Galveston County	48	167	722700	3	430	510	600	85.00%
15000US481677227002	Block Group 2, Census Tract 7227, Galveston County, Texas	TX	Galveston County	48	167	722700	2	310	360	490	73.47%
15000US481677227004	Block Group 4, Census Tract 7227, Galveston County, Texas	TX	Galveston County	48	167	722700	4	345	695	1835	37.87%
15000US481677228001	Block Group 1, Census Tract 7228, Galveston County, Texas	TX	Galveston County	48	167	722800	1	330	385	950	40.53%
15000US481677231003	Block Group 3, Census Tract 7231, Galveston County, Texas	TX	Galveston County	48	167	723100	3	340	535	755	70.86%
15000US481677230001	Block Group 1, Census Tract 7230, Galveston County, Texas	TX	Galveston County	48	167	723000	1	575	660	1120	58.93%

15000US481677230002	Block Group 2, Census Tract 7230, Galveston County, Texas	TX	Galveston County	48	167	723000	2	490	695	1120	62.05%
15000US481677230003	Block Group 3, Census Tract 7230, Galveston County, Texas	TX	Galveston County	48	167	723000	3	445	700	1020	68.63%
15000US481677231001	Block Group 1, Census Tract 7231, Galveston County, Texas	TX	Galveston County	48	167	723100	1	230	330	740	44.59%
15000US481677231002	Block Group 2, Census Tract 7231, Galveston County, Texas	TX	Galveston County	48	167	723100	2	500	720	1915	37.60%
15000US481677232001	Block Group 1, Census Tract 7232, Galveston County, Texas	TX	Galveston County	48	167	723200	1	205	700	1515	46.20%
15000US481677234001	Block Group 1, Census Tract 7234, Galveston County, Texas	TX	Galveston County	48	167	723400	1	545	885	2040	43.38%
15000US481677234004	Block Group 4, Census Tract 7234, Galveston County, Texas	TX	Galveston County	48	167	723400	4	275	585	1375	42.55%
15000US481677235021	Block Group 1, Census Tract 7235.02, Galveston County, Texas	TX	Galveston County	48	167	723502	1	420	520	1790	29.05%
15000US481677236001	Block Group 1, Census Tract 7236, Galveston County, Texas	TX	Galveston County	48	167	723600	1	650	915	1920	47.66%
15000US481677237002	Block Group 2, Census Tract 7237, Galveston County, Texas	TX	Galveston County	48	167	723700	2	660	785	1130	69.47%
15000US481677243002	Block Group 2, Census Tract 7243, Galveston County, Texas	TX	Galveston County	48	167	724300	2	120	150	290	51.72%
15000US481677238001	Block Group 1, Census Tract 7238, Galveston County, Texas	TX	Galveston County	48	167	723800	1	420	630	1295	48.65%
15000US481677238003	Block Group 3, Census Tract 7238, Galveston County, Texas	TX	Galveston County	48	167	723800	3	355	530	1995	26.57%
15000US481677240002	Block Group 2, Census Tract 7240, Galveston County, Texas	TX	Galveston County	48	167	724000	2	145	165	295	55.93%
15000US481677242002	Block Group 2, Census Tract 7242, Galveston County, Texas	TX	Galveston County	48	167	724200	2	365	415	675	61.48%
15000US481677243001	Block Group 1, Census Tract 7243, Galveston County, Texas	TX	Galveston County	48	167	724300	1	240	300	390	76.92%
15000US481677243004	Block Group 4, Census Tract 7243, Galveston County, Texas	TX	Galveston County	48	167	724300	4	145	235	465	50.54%
15000US481677243005	Block Group 5, Census Tract 7243, Galveston County, Texas	TX	Galveston County	48	167	724300	5	700	920	1295	71.04%
15000US481677258001	Block Group 4, Census Tract 7235.02, Galveston County, Texas	TX	Galveston County	48	167	725800	1	355	450	825	54.55%
15000US481677257001	Block Group 1, Census Tract 7257, Galveston County, Texas	TX	Galveston County	48	167	725700	1	225	390	1355	28.78%
15000US481677256002	Block Group 2, Census Tract 7256, Galveston County, Texas	TX	Galveston County	48	167	725600	2	455	730	1125	64.89%
15000US481677232002	Block Group 2, Census Tract 7232, Galveston County, Texas	TX	Galveston County	48	167	723200	2	1145	1540	2845	54.13%
15000US481677235024	Block Group 4, Census Tract 7235.02, Galveston County, Texas	TX	Galveston County	48	167	723502	4	435	895	2495	35.87%
15000US481677235023	Block Group 3, Census Tract 7235.02, Galveston County, Texas	TX	Galveston County	48	167	723502	3	235	480	1555	30.87%
15000US481677259001	Block Group 1, Census Tract 7259, Galveston County, Texas	TX	Galveston County	48	167	725900	1	355	445	975	45.64%
15000US481677241011	Block Group 1, Census Tract 7241.01, Galveston County, Texas	TX	Galveston County	48	167	724101	1	275	360	555	64.86%
15000US481677242001	Block Group 1, Census Tract 7242, Galveston County, Texas	TX	Galveston County	48	167	724200	1	160	400	960	41.67%
15000US481677237001	Block Group 1, Census Tract 7237, Galveston County, Texas	TX	Galveston County	48	167	723700	1	290	500	905	55.25%
15000US481677240001	Block Group 1, Census Tract 7240, Galveston County, Texas	TX	Galveston County	48	167	724000	1	75	145	200	72.50%
15000US481677260001	Block Group 1, Census Tract 7260, Galveston County, Texas	TX	Galveston County	48	167	726000	1	100	245	930	26.34%
15000US481677252002	Block Group 2, Census Tract 7252, Galveston County, Texas	TX	Galveston County	48	167	725200	2	710	1020	1330	76.69%
15000US481677261002	Block Group 2, Census Tract 7261, Galveston County, Texas	TX	Galveston County	48	167	726100	2	155	175	775	22.58%
15000US481677262002	Block Group 2, Census Tract 7262, Galveston County, Texas	TX	Galveston County	48	167	726200	2	965	1495	2105	71.02%
15000US481677229001	Block Group 1, Census Tract 7229, Galveston County, Texas	TX	Galveston County	48	167	722900	1	415	1010	1365	73.99%
15000US481677259002	Block Group 2, Census Tract 7259, Galveston County, Texas	TX	Galveston County	48	167	725900	2	570	865	1330	65.04%
15000US481677235011	Block Group 1, Census Tract 7235.01, Galveston County, Texas	TX	Galveston County	48	167	723501	1	50	55	400	13.75%
15000US481677226001	Block Group 1, Census Tract 7226, Galveston County, Texas	TX	Galveston County	48	167	722600	1	970	1530	2005	76.31%
15000US481677254003	Block Group 3, Census Tract 7254, Galveston County, Texas	TX	Galveston County	48	167	725400	3	315	400	1070	37.38%
15000US481677258003	Block Group 3, Census Tract 7258, Galveston County, Texas	TX	Galveston County	48	167	725800	3	525	865	2010	43.03%
15000US481677258002	Block Group 2, Census Tract 7258, Galveston County, Texas	TX	Galveston County	48	167	725800	2	460	565	845	66.86%
15000US481677246002	Block Group 2, Census Tract 7246, Galveston County, Texas	TX	Galveston County	48	167	724600	2	1180	1290	1540	83.77%
15000US481677243003	Block Group 3, Census Tract 7243, Galveston County, Texas	TX	Galveston County	48	167	724300	3	305	420	535	78.50%
15000US481677244002	Block Group 2, Census Tract 7244, Galveston County, Texas	TX	Galveston County	48	167	724400	2	325	395	740	53.38%
15000US481677244001	Block Group 1, Census Tract 7244, Galveston County, Texas	TX	Galveston County	48	167	724400	1	500	825	1285	64.20%
15000US481677247002	Block Group 2, Census Tract 7247, Galveston County, Texas	TX	Galveston County	48	167	724700	2	630	810	1230	65.85%
15000US481677235022	Block Group 2, Census Tract 7235.02, Galveston County, Texas	TX	Galveston County	48	167	723502	2	380	955	2940	32.48%
15000US481677229002	Block Group 2, Census Tract 7229, Galveston County, Texas	TX	Galveston County	48	167	722900	2	450	685	1205	56.85%
15000US481677261001	Block Group 1, Census Tract 7261, Galveston County, Texas	TX	Galveston County	48	167	726100	1	215	425	1460	29.11%
15000US481677234003	Block Group 3, Census Tract 7234, Galveston County, Texas	TX	Galveston County	48	167	723400	3	370	555	2150	25.81%
Totals								86,800	138,890	271,450	51.17%



C) Hurricane Harvey State Mitigation Competition Scoring Criteria

Fort Bend County - Brazos River / Evacuation Route

Question(s)	Criteria	Maximum Points	Self-Score
What is the project service area's Composite Disaster Index?	County Composite Disaster Index	10 Points Possible	10
	<i>Top 10%</i>	<i>10 Points</i>	X
	<i>Top 25%</i>	<i>8 Points</i>	
	<i>Top 75%</i>	<i>5 Points</i>	
	<i>Bottom 25%</i>	<i>2 Points</i>	
	<i>Bottom 10%</i>	<i>0 Points</i>	
	<i>Prorated CDI rank</i>	<i>Calculated Points</i>	
What is the project service area's Social Vulnerability Index (SoVI)?	Social Vulnerability Index	10 Points Possible	2
	<i>High</i>	<i>10 Points</i>	
	<i>Medium High</i>	<i>8 Points</i>	
	<i>Medium</i>	<i>5 Points</i>	
	<i>Medium Low</i>	<i>2 Points</i>	
	<i>Low</i>	<i>0 Points</i>	
	<i>Prorated SoVI rank</i>	<i>Calculated Points</i>	X
What is the project service area's Per Capita Market Value?	Per Capita Market Value	10 Points Possible	2
	<i>Less than \$40,000.00</i>	<i>10 Points</i>	
	<i>\$40,000.01 - \$65,000.00</i>	<i>8 Points</i>	
	<i>\$65,000.01 - \$100,000.00</i>	<i>5 Points</i>	
	<i>\$100,000.01 - \$250,000.00</i>	<i>2 Points</i>	X
	<i>\$250,000.01 or greater</i>	<i>0 Points</i>	
Does the project meet the low-to moderate-income (LMI) HUD National Objective?	LMI National Objective	20 Points Possible	20
	Project meets LMI national objective	<i>20 Points</i>	X
	Project does not meet LMI national objective	<i>0 Points</i>	
Is the project type identified in a Local Adopted Plan?	Project type Identified in Local Adopted Plan	5 Points Possible	5
	Project type identified in local adopted plan	<i>5 Points</i>	X
	Project type not identified	<i>0 Points</i>	
What is the applicant's management capacity?	Management Capacity	15 Points Possible	11.25
	No CDBG-DR contracts with GLO (management capacity assessment)	<i>Up to 15 Points</i>	



Question(s)	Criteria	Maximum Points	Self-Score
	Performance on GLO CDBG-DR contract(s), programs and/or projects	<i>Up to 15 Points</i>	X
What is the total project application amount per total project beneficiaries?	Project Impact	25 Points Possible	15.99
	Total project application amount per total project beneficiaries	<i>15 Points</i>	12
What is the percentage of project beneficiaries out of the total population within the applying jurisdiction(s)?	Percentage of total project beneficiaries out of the total population within a jurisdiction(s)	<i>10 Points</i>	3.99
What percentage of project costs being requested are coming from non-CDBG funding sources?	Leverage	5 Points Possible	5
	Non-CDBG Leverage (a minimum value of 1% of the CDBG-MIT funds requested)	<i>5 Points</i>	X
What mitigation or resiliency measures have been taken by the applicant(s)?	Mitigation/Resiliency Measures	5 Points Possible	5
	Measures taken by the applicants(s)	<i>5 Points</i>	X
Total Possible Points		105 Possible Points	76.23
Tie: Breaker: Higher Poverty Rate			

\$97.8M

*Applications that do not score a minimum of 65 points will only be considered after all applications scoring greater than this amount have been funded.