

COMMISSIONERS

Each Commissioner is a member of the Commissioner’s Court. Each has an equal vote, together with the County Judge, in deciding issues brought to the Court. Each Commissioner oversees their precinct interacting with citizens, other governmental agencies, and private entities to ensure the smooth operation of the precinct. A Commissioner is required to be knowledgeable of the statutes governing counties and must attend 16 hours of qualifying education each 12-month period.

Duties and Responsibilities

- Sets the County’s ad valorem tax rate and most county fees.
- Approves County budgets and expenditures.
- Issues debt of the County.
- Builds and maintains County roads and bridges.
- Builds, maintains and operates County facilities (buildings, parks, grounds).
- Constructs and maintains County drainage.
- Sets compensation of most county officials and employees.
- Creates offices, boards, and commissions and appoints their members.
- Enters into all contracts with vendors and other governmental agencies.
- Holds general and special elections of the county.
- Responsible for county redistricting and setting precinct boundaries.
- Adopts and enforces subdivision regulations.
- Responsible for public health.
- Responsible for indigent health care and legal representation.

PERFORMANCE MEASURES	2009 ACTUAL	2010 ACTUAL	2011 PROJECTED
No measures submitted.			

COMMISSIONER PRECINCT 1

FUND: 100 General

ACCOUNTING UNIT: 100401100 Commissioner Precinct 1

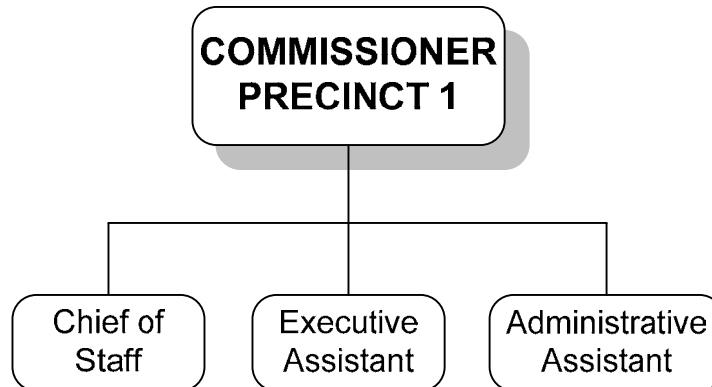
EXPENSE BUDGET

CATEGORY	2009 ACTUAL	2010 ADOPTED	2011 ADOPTED
Salaries and Personnel Costs	\$ 359,271	\$ 366,570	\$ 362,945
Operating Costs	\$ 19,127	\$ 14,752	\$ 15,484
Information Technology Costs	\$ 3,316	\$ 1,416	\$ 0
Capital Acquisitions	\$ 0	\$ 0	\$ 0
TOTAL	\$ 381,714	\$ 382,738	\$ 378,429

2011 AUTHORIZED POSITIONS

Job Title	Job Code	Grade	Count
County Commissioner	J00050	G00	1
Administrative Assistant	J09001	G09	1
Executive Assistant	J11021	G11	1
Staff Director	J12043	G12	1
Total Authorized Positions			4

ORGANIZATION CHART



COMMISSIONER PRECINCT 2

FUND: 100 General

ACCOUNTING UNIT: 100401200 Commissioner Precinct 2

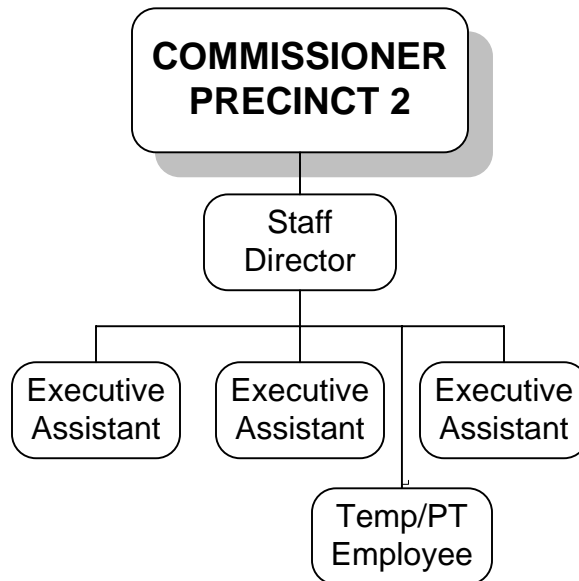
EXPENSE BUDGET

CATEGORY	2009 ACTUAL	2010 ADOPTED	2011 ADOPTED
Salaries and Personnel Costs	\$ 482,375	\$ 484,746	\$ 482,796
Operating Costs	\$ 31,672	\$ 28,922	\$ 24,045
Information Technology Costs	\$ 1,415	\$ 0	\$ 500
Capital Acquisitions	\$ 0	\$ 0	\$ 0
TOTAL	\$ 515,462	\$ 513,668	\$ 507,341

2011 AUTHORIZED POSITIONS

Job Title	Job Code	Grade	Count
County Commissioner	J00050	G00	1
Executive Assistant	J11021	G11	3
Staff Director	J12043	G12	1
Total Authorized Positions			5

ORGANIZATION CHART



COMMISSIONER PRECINCT 3

FUND: 100 General

ACCOUNTING UNIT: 100401300 Commissioner Precinct 3

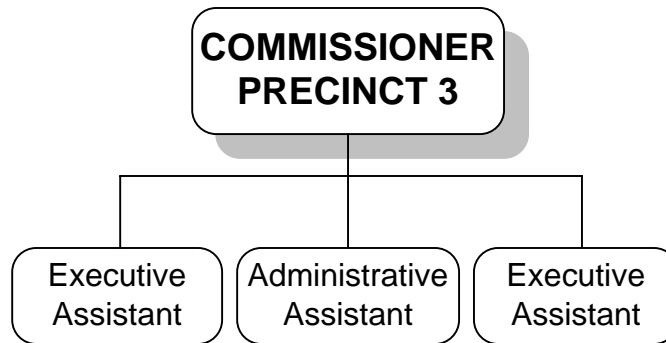
EXPENSE BUDGET

CATEGORY	2009 ACTUAL	2010 ADOPTED	2011 ADOPTED
Salaries and Personnel Costs	\$ 349,604	\$ 355,303	\$ 351,667
Operating Costs	\$ 15,757	\$ 43,500	\$ 40,719
Information Technology Costs	\$ 115	\$ 1,500	\$ 2,067
Capital Acquisitions	\$ 5,220	\$ 0	\$ 0
TOTAL	\$ 370,696	\$ 400,303	\$ 394,453

2011 AUTHORIZED POSITIONS

Job Title	Job Code	Grade	Count
County Commissioner	J00050	G00	1
Administrative Assistant	J09001	G09	1
Executive Assistant	J11021	G11	2
Total Authorized Positions			4

ORGANIZATION CHART



COMMISSIONER PRECINCT 4

FUND: 100 General

ACCOUNTING UNIT: 100401400 Commissioner Precinct 4

EXPENSE BUDGET

CATEGORY	2009 ACTUAL	2010 ADOPTED	2011 ADOPTED
Salaries and Personnel Costs	\$ 335,472	\$ 342,408	\$ 340,332
Operating Costs	\$ 13,331	\$ 15,788	\$ 12,925
Information Technology Costs	\$ 1,342	\$ 2,500	\$ 917
Capital Acquisitions	\$ 0	\$ 0	\$ 0
TOTAL	\$ 350,145	\$ 360,696	\$ 354,174

2011 AUTHORIZED POSITIONS

Job Title	Job Code	Grade	Count
County Commissioner	J00050	G00	1
Administrative Assistant	J09001	G09	1
Executive Assistant	J11021	G11	2
Total Authorized Positions			4

ORGANIZATION CHART

