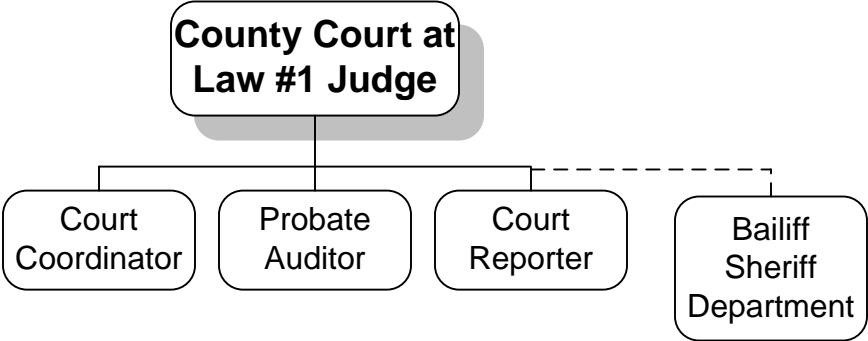


COUNTY COURT AT LAW #1

ORGANIZATION CHART



COUNTY COURT AT LAW #2

MISSION

To expedite court business and administer justice in a fair, efficient and effective manner. Based on reports prepared by the Fort Bend County Clerk’s Office and filed with the Office of Court Administration, we will continue to provide an environment conducive to the quick resolution of matters before this court in accordance with the standards set by the Supreme Court of Texas.

Fort Bend County has and is experiencing tremendous growth and this growth impacts the Court facilities and staff. This growth brings with it an increase in filing of criminal and juvenile matters as well as civil and probate matters. With the economic issues that are at hand, there are considerable number of pro se litigants who cannot afford legal representative and chose to represent themselves in Court. The number of Courts and Court personnel in each Court has remained the same although Court activity has significantly increased due to the increase in filings.

FUND: 100 General

ACCOUNTING UNIT: 100426200 County Court at Law #2

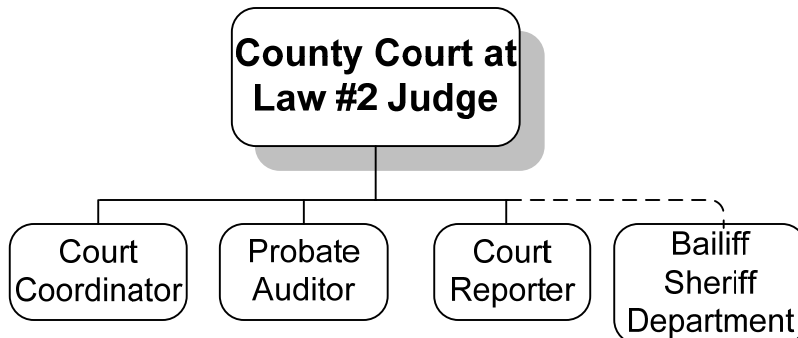
EXPENSE BUDGET

| CATEGORY | 2010 ACTUAL | 2011 ADOPTED | 2012 ADOPTED |
|------------------------------|-------------------|-------------------|-------------------|
| Salaries & Personnel Costs | \$ 447,476 | \$ 458,315 | \$ 456,681 |
| Operating & Training Costs | \$ 375,855 | \$ 221,900 | \$ 234,400 |
| Information Technology Costs | \$ 2,501 | \$ 2,977 | \$ - |
| Capital Acquisitions | \$ - | \$ - | \$ - |
| TOTAL | \$ 825,831 | \$ 683,192 | \$ 691,081 |

2012 AUTHORIZED POSITIONS

| Job Title | Job Code | Grade | Count |
|-----------------------------------|----------|-------|----------|
| County Court at Law Judge | J00015 | G00 | 1 |
| Court Reporter | J00055 | G00 | 1 |
| Court Coordinator | J11015 | G11 | 1 |
| Probate Auditor | J11077 | G11 | 1 |
| Total Authorized Positions | | | 4 |

ORGANIZATION CHART



COUNTY COURT AT LAW #3

MISSION

To expedite court business and administer justice in a fair, efficient and effective manner. Based on reports prepared by the Fort Bend County Clerk's Office and filed with the Office of Court Administration, we will continue to provide an environment conducive to the quick resolution of matters before this court in accordance with the standards set by the Supreme Court of Texas.

OBJECTIVE

Fort Bend County's continued growth along with our current economic issues impacts this court's facilities and staff. While court activity has increased dramatically over the past four years, the number of court personnel and the number of courts have remained the same. With growth comes an increased filing of criminal and juvenile matters by the State of Texas, an increased filing of civil and probate matters, and an increase of pro se litigants. All of which require hearings and the court's attention.

FUND: 100 General

ACCOUNTING UNIT: 100426300 County Court at Law #3

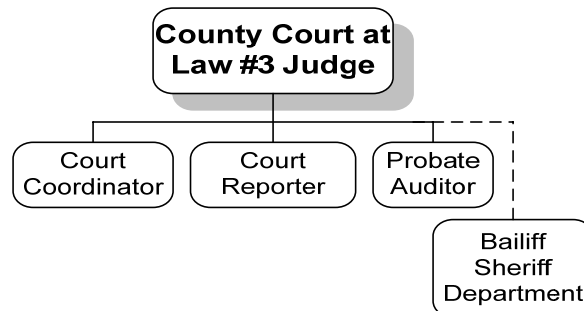
EXPENSE BUDGET

| CATEGORY | 2010 ACTUAL | 2011 ADOPTED | 2012 ADOPTED |
|------------------------------|-------------------|-------------------|-------------------|
| Salaries & Personnel Costs | \$ 434,360 | \$ 452,316 | \$ 452,754 |
| Operating & Training Costs | \$ 425,789 | \$ 204,140 | \$ 232,100 |
| Information Technology Costs | \$ 118 | \$ - | \$ 2,085 |
| Capital Acquisitions | \$ - | \$ 6,800 | \$ - |
| TOTAL | \$ 860,267 | \$ 663,256 | \$ 686,940 |

2012 AUTHORIZED POSITIONS

| Job Title | Job Code | Grade | Count |
|-----------------------------------|----------|-------|----------|
| County Court at Law Judge | J00015 | G00 | 1 |
| Court Reporter | J00055 | G00 | 1 |
| Court Coordinator | J11015 | G11 | 1 |
| Probate Auditor | J11077 | G11 | 1 |
| Total Authorized Positions | | | 4 |

ORGANIZATION CHART



COUNTY COURT AT LAW #4

MISSION

To expedite court business and administer justice in a fair, efficient, effective manner. Based on reports prepared by the Fort Bend County Clerk’s Office and filed with the Office of Court Administration, we will continue to provide an environment conducive to the quick resolution of matters before this court in accordance with the standards set by the Supreme Court of Texas.

Fort Bend County has and is experiencing tremendous growth which impacts the Court facilities and staff. This growth brings an increase in filing of criminal, juvenile, civil, and probate matters. The number of Courts and Court personnel in each Court has remained the same although activity has increased tremendously.

FUND: 100 General

ACCOUNTING UNIT: 100426400 County Court at Law #4

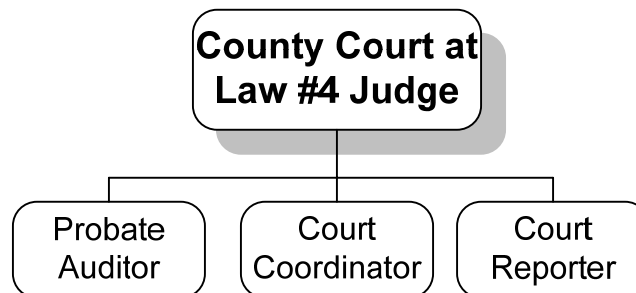
EXPENSE BUDGET

| CATEGORY | 2010 ACTUAL | 2011 ADOPTED | 2012 ADOPTED |
|------------------------------|---------------------|-------------------|-------------------|
| Salaries & Personnel Costs | \$ 434,599 | \$ 454,218 | \$ 457,664 |
| Operating & Training Costs | \$ 659,291 | \$ 210,590 | \$ 228,823 |
| Information Technology Costs | \$ - | \$ - | \$ 677 |
| TOTAL | \$ 1,093,890 | \$ 664,808 | \$ 687,165 |

2012 AUTHORIZED POSITIONS

| Job Title | Job Code | Grade | Count |
|-----------------------------------|----------|-------|----------|
| County Court at Law Judge | J00015 | G00 | 1 |
| Court Reporter | J00055 | G00 | 1 |
| Court Coordinator | J11015 | G11 | 1 |
| Probate Auditor | J11077 | G11 | 1 |
| Total Authorized Positions | | | 4 |

ORGANIZATION CHART



ASSOCIATE COUNTY COURT AT LAW

FUND: 100 General

ACCOUNTING UNIT: 100426500 Associate County Court at Law

EXPENSE BUDGET

| CATEGORY | 2010 ACTUAL | 2011 ADOPTED | 2012 ADOPTED |
|------------------------------|-------------------|-------------------|-------------------|
| Salaries & Personnel Costs | \$ 132,375 | \$ 183,345 | \$ 185,152 |
| Operating & Training Costs | \$ 11,163 | \$ 12,632 | \$ 10,419 |
| Information Technology Costs | \$ 1,300 | \$ - | \$ 1,224 |
| TOTAL | \$ 144,838 | \$ 195,977 | \$ 196,794 |

2012 AUTHORIZED POSITIONS

| Job Title | Job Code | Grade | Count |
|-----------------------------------|----------|-------|----------|
| Associate Judge | J00059 | G00 | 1 |
| Administrative Secretary | J07001 | G07 | 1 |
| Total Authorized Positions | | | 2 |

ORGANIZATION CHART

