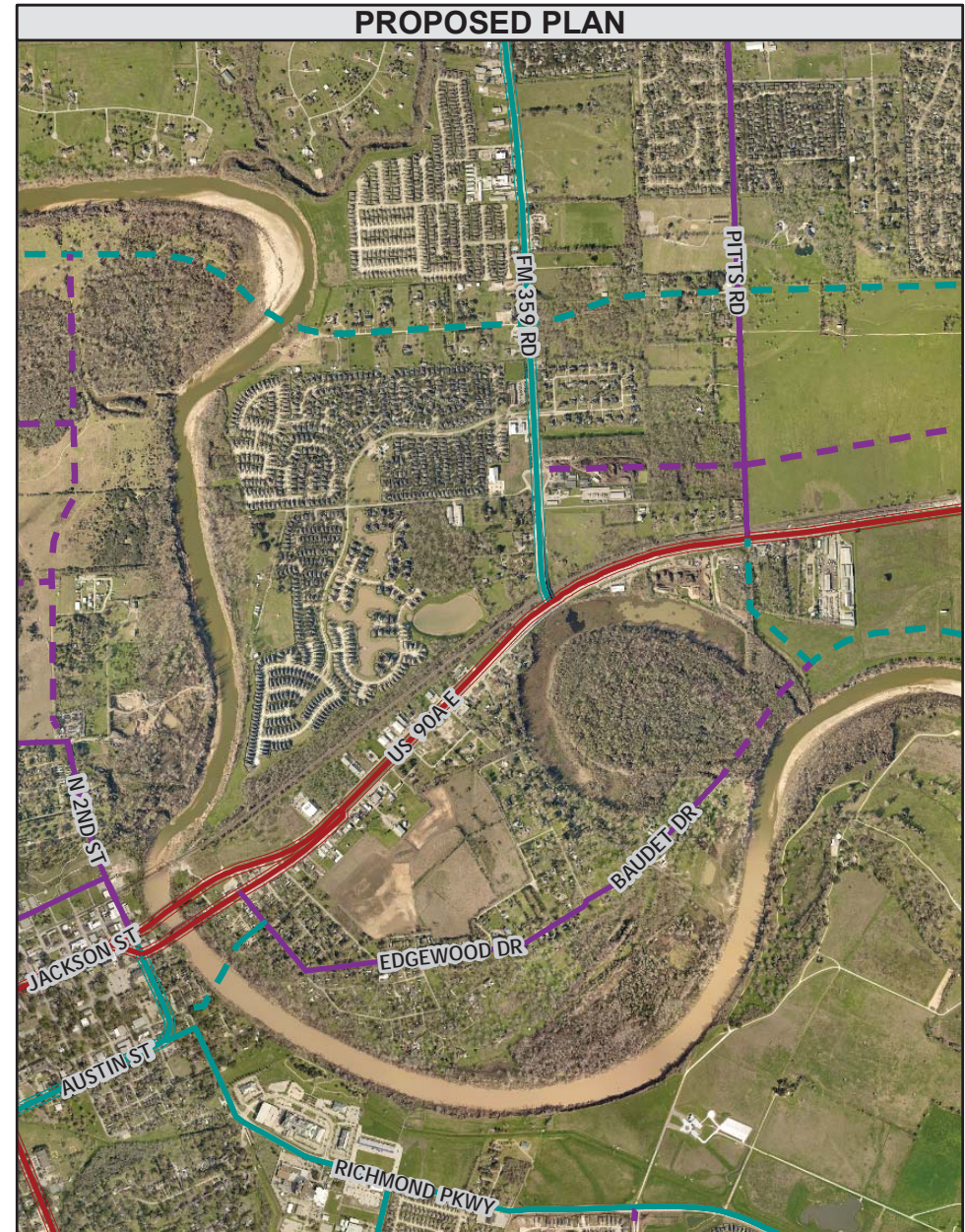
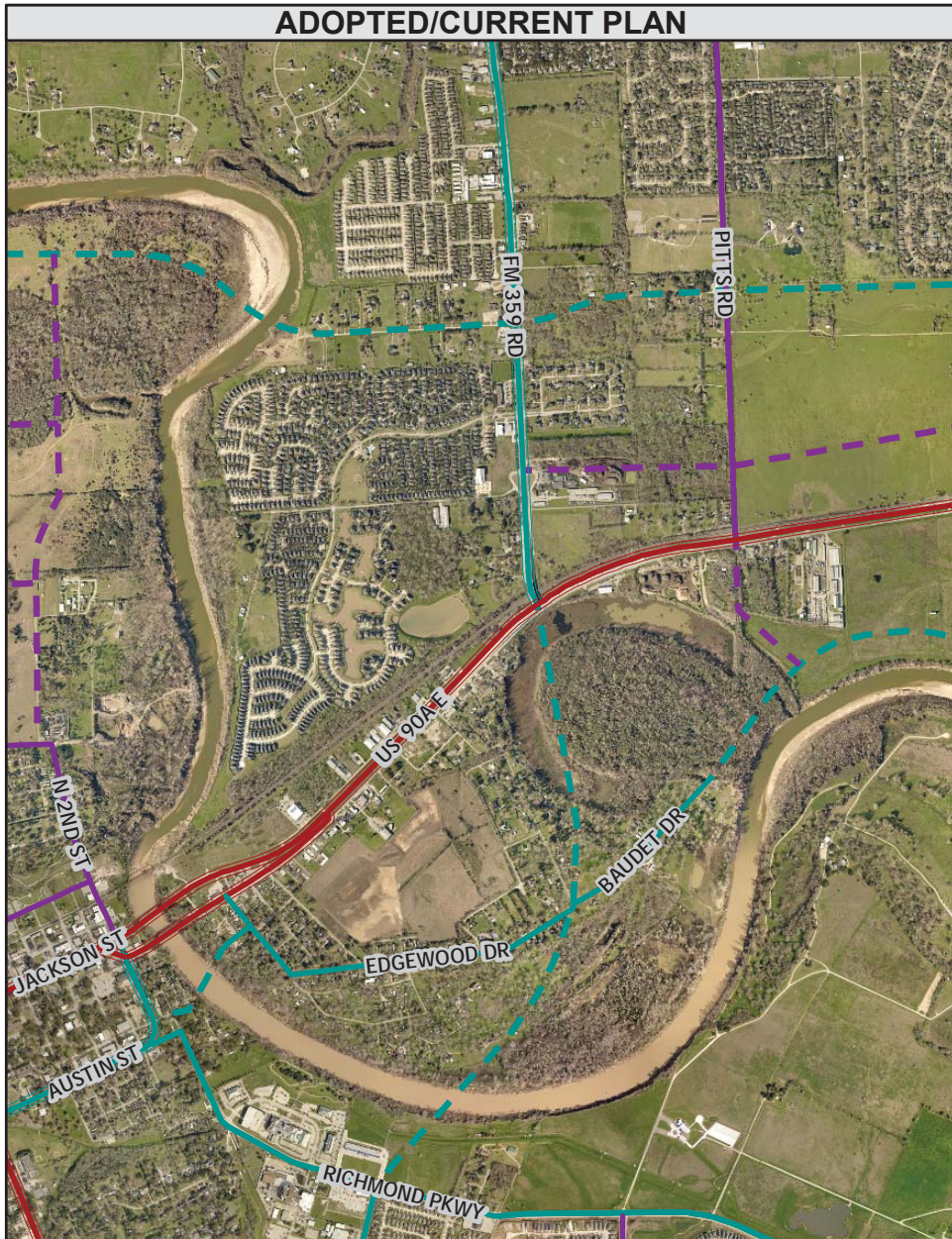


Golfview Extension to FM 359 and Edgewood / Baudet Drives

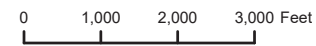


2015 MTP
Proposed Revision

Map By:
Engineering GIS
April 2021

Legend

- City/County Collector
- City/County Major Thoroughfare
- - - State Major Thoroughfare
- City/County Principal Thoroughfare
- - - State Principal Thoroughfare
- - - Collector
- - - Major Thoroughfare
- - - Principal Thoroughfare



Disclaimer

This Geographic Information Systems (GIS) Data is a public resource of general information. The information contained was generated from GIS data maintained by Fort Bend County and different sources and agencies. The County of Fort Bend makes no warranty, representation, or guarantee as to the content, sequence, accuracy, timeliness, or completeness of any of the spatial data or database information provided herein. The County of Fort Bend shall assume no liability for any errors, omissions, or inaccuracies in the information provided, regardless of how caused; or any decision made or action taken or not taken by any person relying on any information or data furnished within. If any errors are detected, please contact the GIS Division of Fort Bend County Engineering so they may be corrected.