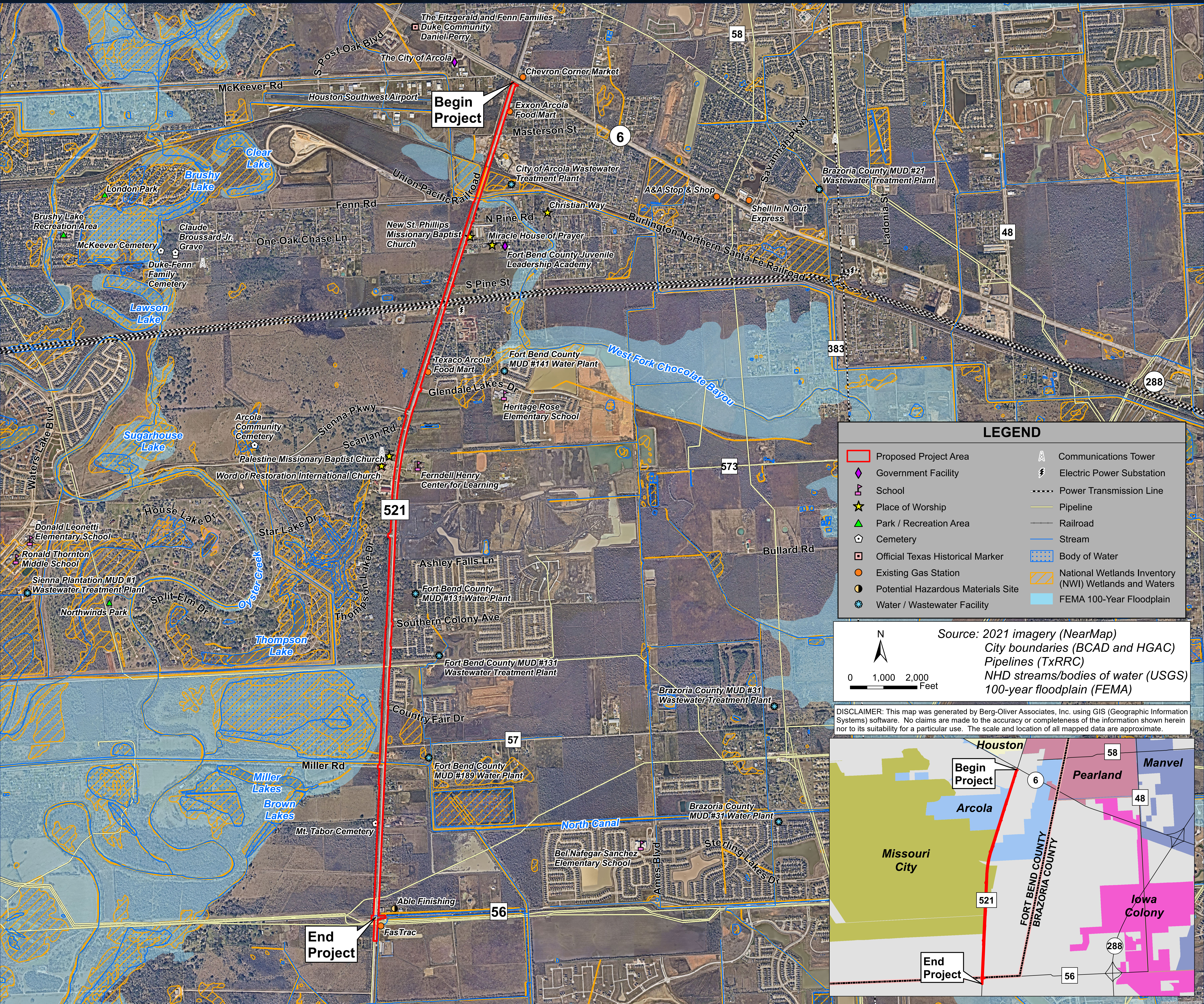


# ENVIRONMENTAL CONSTRAINTS MAP



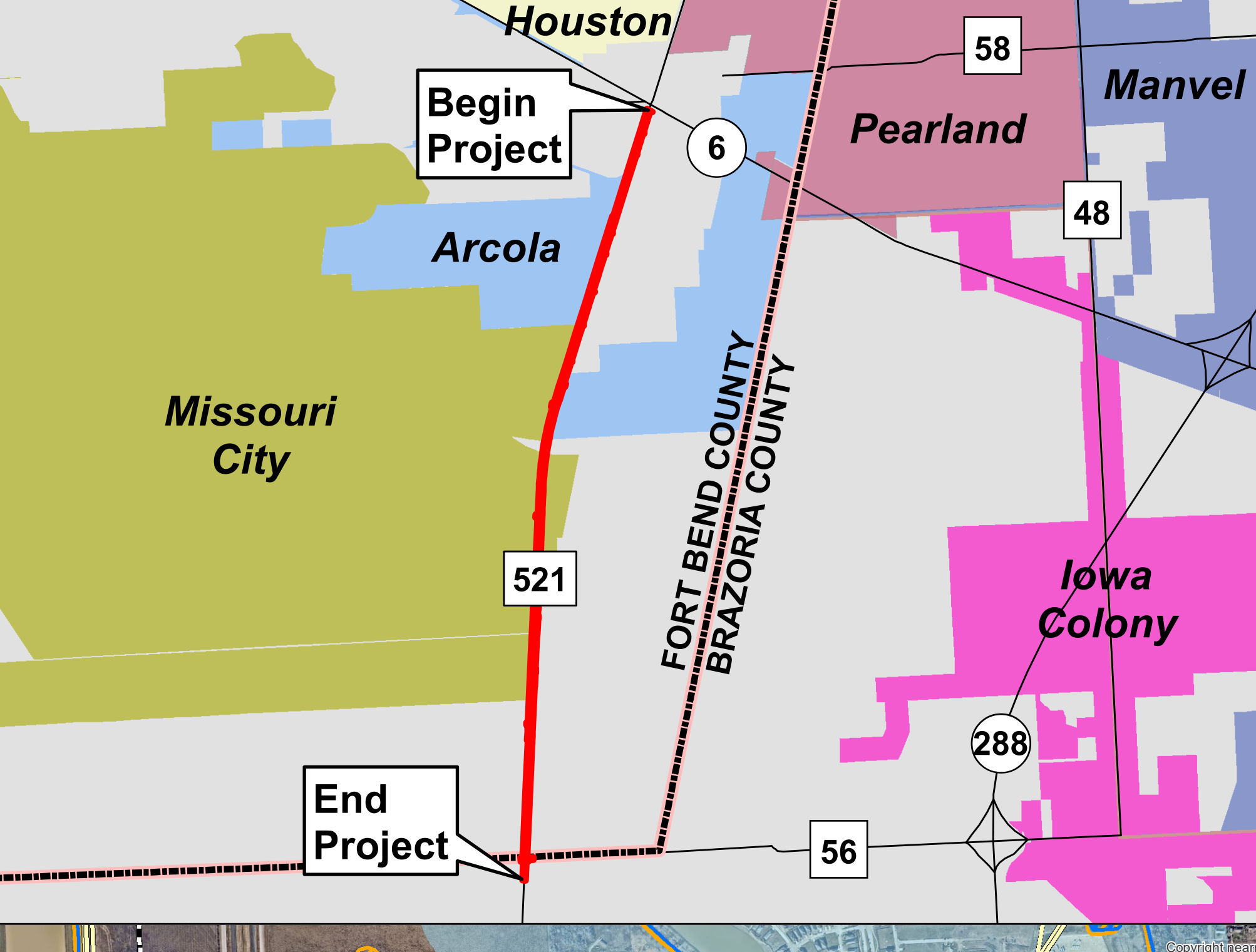
### LEGEND

Proposed Project Area	Communications Tower
Government Facility	Electric Power Substation
School	Power Transmission Line
Place of Worship	Pipeline
Park / Recreation Area	Railroad
Cemetery	Stream
Official Texas Historical Marker	Body of Water
Existing Gas Station	National Wetlands Inventory (NWI) Wetlands and Waters
Potential Hazardous Materials Site	FEMA 100-Year Floodplain
Water / Wastewater Facility	

Source: 2021 imagery (NearMap)  
 City boundaries (BCAD and HGAC)  
 Pipelines (TxRRC)  
 NHD streams/bodies of water (USGS)  
 100-year floodplain (FEMA)

0 1,000 2,000 Feet

DISCLAIMER: This map was generated by Berg-Oliver Associates, Inc. using GIS (Geographic Information Systems) software. No claims are made to the accuracy or completeness of the information shown herein nor to its suitability for a particular use. The scale and location of all mapped data are approximate.



**FM 521 PROPOSED WIDENING PROJECT**  
**FROM SH 6 TO CR 56**  
**CSJ: 0111-03-064**

VIRTUAL PUBLIC MEETING DISPLAY  
 JUNE 2021

