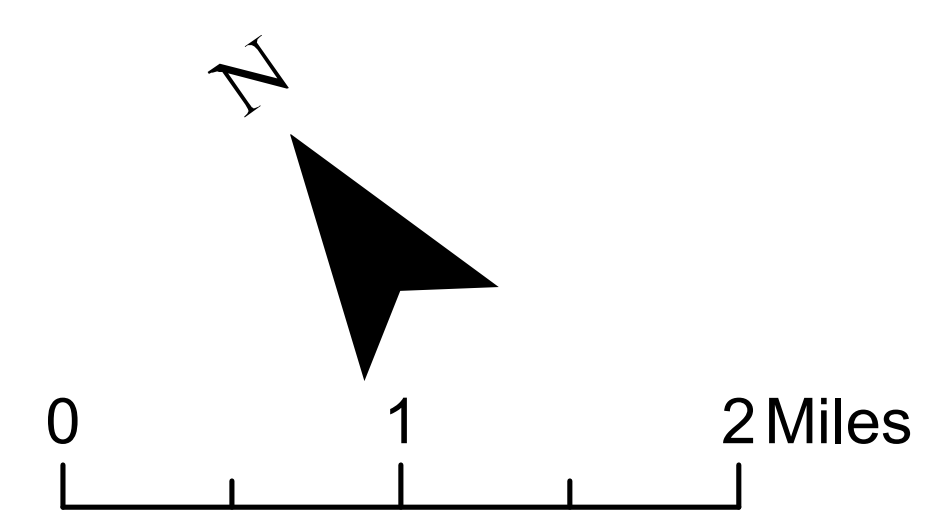
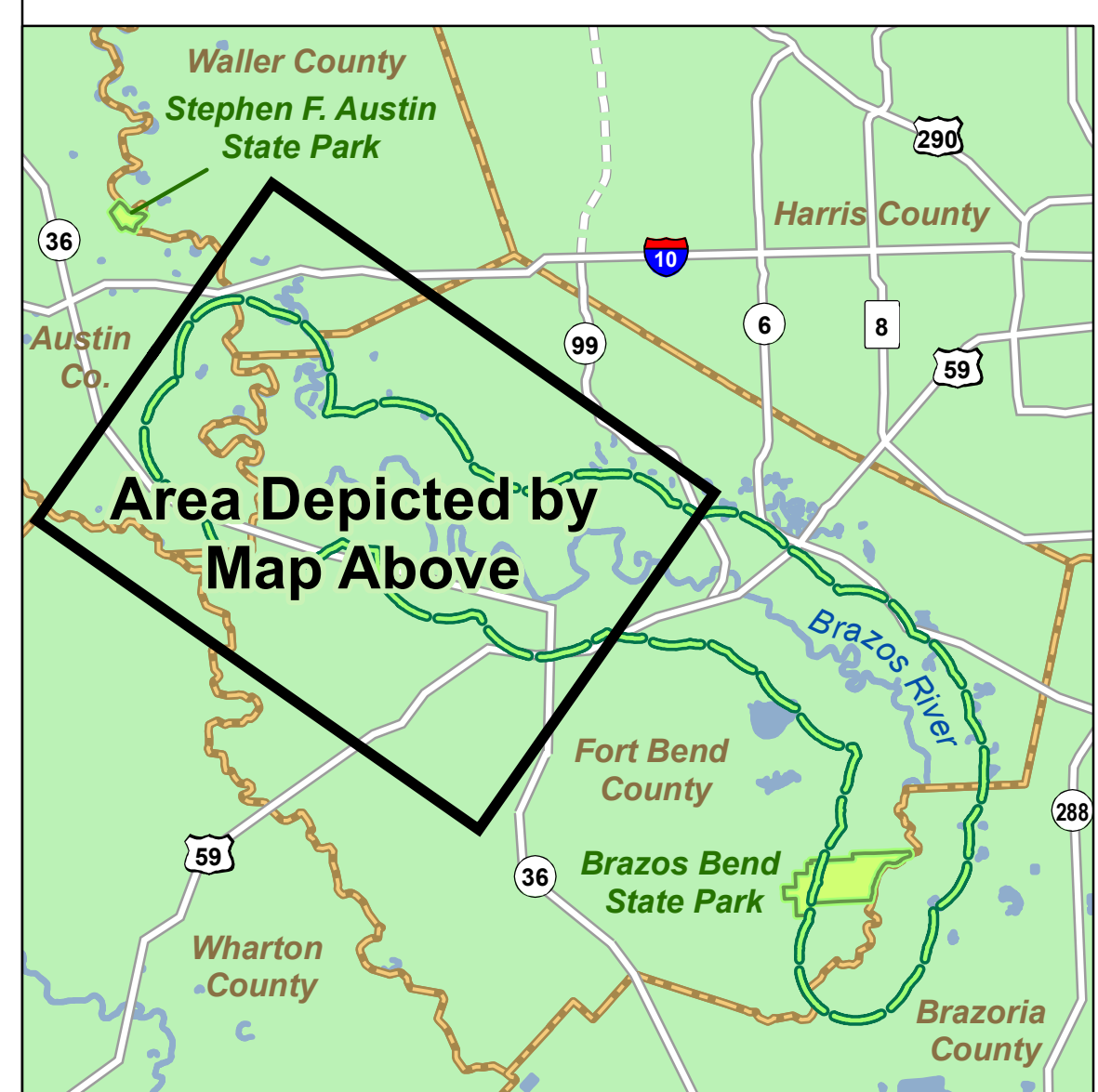
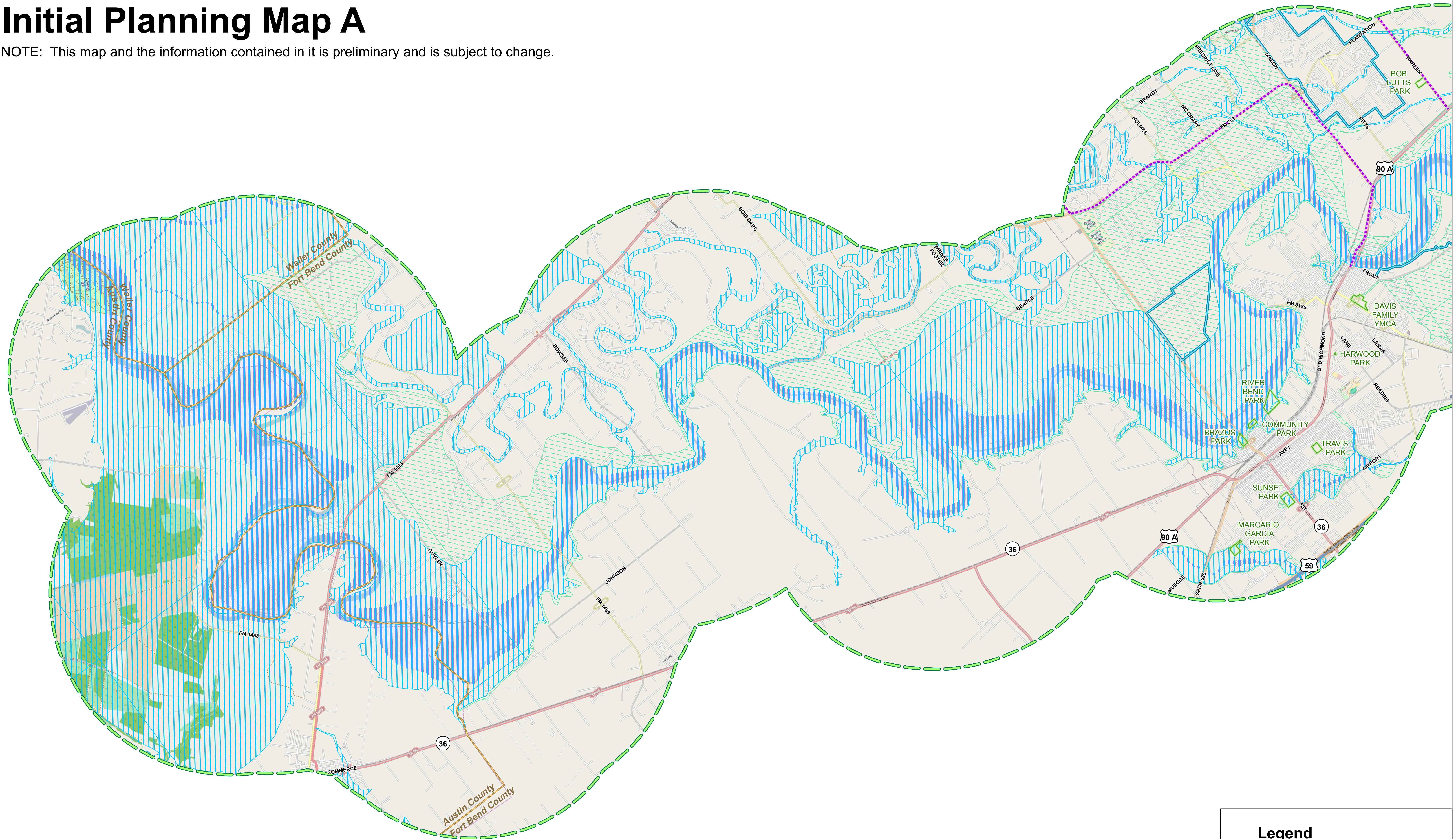


Brazos River Recreational Master Plan

Initial Planning Map A

NOTE: This map and the information contained in it is preliminary and is subject to change.



Legend

- Brazos River Study Area
- Existing Trail
- Future Trail
- Existing Park
- Levee
- 100-Year Floodplain
- 500-Year Floodplain
- FLOODWAY

Sources: Fort Bend County, FEMA, VDW&V, Houston-Galveston Area Council, ESRI.

VanDeWiele & Vogler
Incorporated Consulting Engineers