



FORT BEND COUNTY

CONSTABLE PRECINCT 2



TIMING

EVERY 14.6 SECONDS, A BURGLARY TAKES PLACE IN THE US

MOST BURGLARIES OCCUR BETWEEN **10AM TO 3PM**

BURGLARS SPEND AN AVERAGE OF **8 TO 12 MINUTES** IN YOUR HOME

AVG. LOSS PER BURGLARY: \$1,725

TARGETS

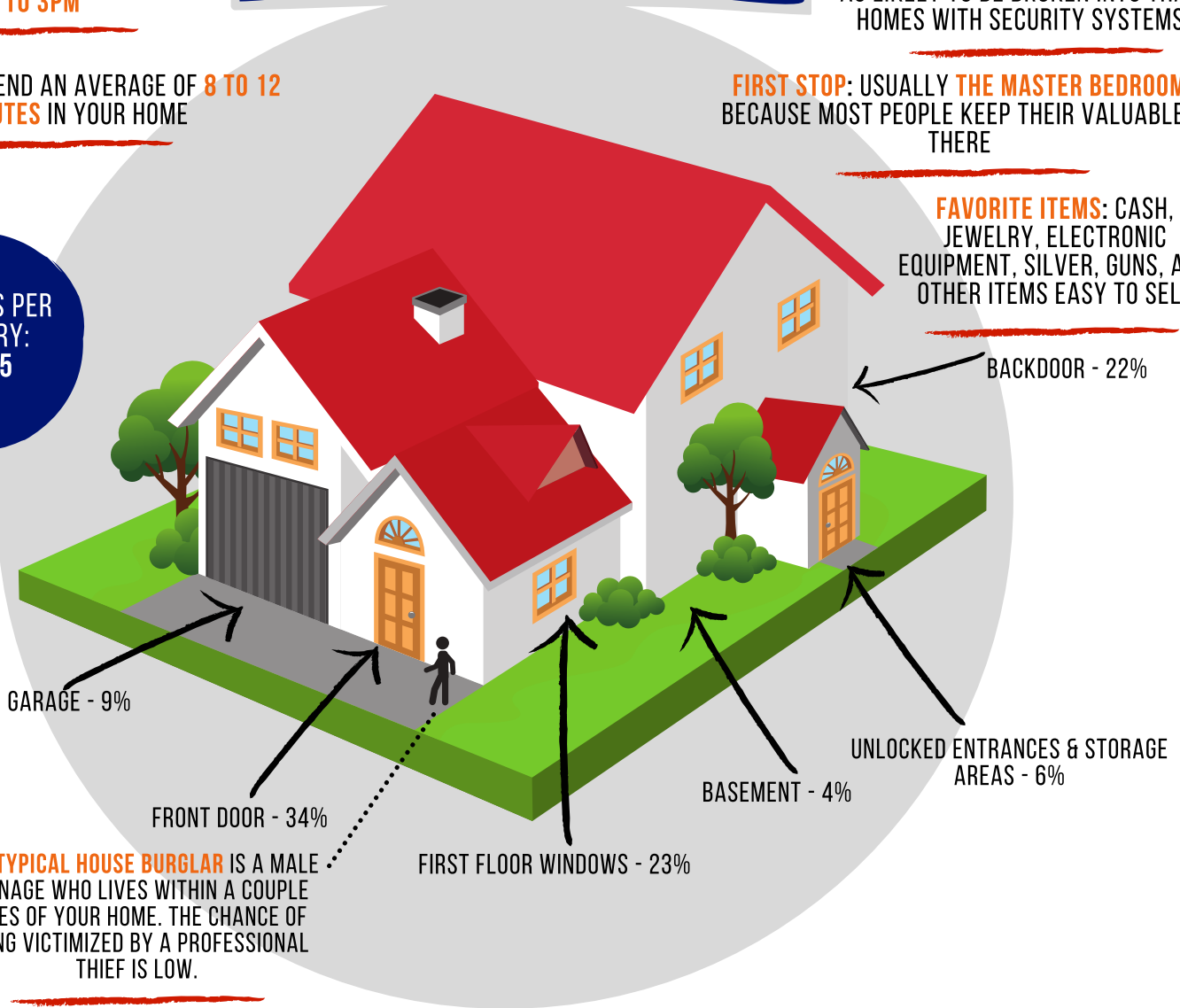
65.8% OF BURGLARIES ARE **RESIDENTIAL**

HOMES WITHOUT SECURITY SYSTEMS ARE ABOUT THREE TIMES AS LIKELY TO BE BROKEN INTO THAN HOMES WITH SECURITY SYSTEMS

FIRST STOP: USUALLY THE MASTER BEDROOM BECAUSE MOST PEOPLE KEEP THEIR VALUABLES THERE

FAVORITE ITEMS: CASH, JEWELRY, ELECTRONIC EQUIPMENT, SILVER, GUNS, AND OTHER ITEMS EASY TO SELL

WHERE THIEVES GAIN ENTRY



THE TYPICAL HOUSE BURGLAR IS A MALE TEENAGE WHO LIVES WITHIN A COUPLE MILES OF YOUR HOME. THE CHANCE OF BEING VICTIMIZED BY A PROFESSIONAL THIEF IS LOW.

PRECAUTIONS YOU CAN TAKE

BURGLARS SEARCH FOR HOMES THAT APPEAR TO BE UNOCCUPIED. A CAR IN THE DRIVEWAY, MOTION-SENSITIVE EXTERIOR LIGHTS, INTERIOR LIGHTS, AND RACIOS AND TVS ON TIMERS ALL GIVE THE IMPRESSION THAT SOMEONE IS IN THE HOME. STOP NEWSPAPER AND MAIL DELIVERY AND HAVE NEIGHBORS WATCH YOUR HOME.

BURGLARS WANT TO SPEND NO MORE THAN 60 SECONDS BREAKING INTO A HOME. MEASURES THAT RAISE THIS TIME - DEADBOLT LOCKS, BARS ON WINDOWS, AND PINS IN SASH WINDOWS - MIGHT CHANGE A BURGLAR'S MIND

DON'T GIVE BURGLARS ANY HELP. CLEAR SHRUBS & TREES AROUND YOUR HOME. DON'T GIVE BURGLARS A PLACE TO HIDE. SECURE TOOL SHEDS AND LADDERS. SOME THIEVES WILL STEAL TOOLS FROM AROUND YOUR PROPERTY AND USE THEM TO BREAK WINDOWS